

ACTmapi, a Treasure-Trove for ACT information

If you want to know anything of a spatial nature about Canberra, and don't have the time waiting to speak to someone at ACCESS Canberra give **ACTmapi** a try. It is a wonderful free source of information.

You can explore around twenty issues such as what development zone you live in, where registered trees are, the location of dog exercise areas, where the heritage areas are or see how the ACT has changed from 1955-2018, what are the fire and flood hazards where you live and much more.

Go and explore the website
www.actmapi.act.gov.au

Contact us

Website: www.gnca.org.au

Email: info@gnca.org.au

Facebook:

www.facebook.com/TheGNCA

Post: PO Box 4127 Manuka ACT
2603

Visit us: We meet on the 2nd
Wednesday each month in East
Hotel. You are welcome to come
and join us.

What's happening with the waste incinerator?

Capital Recycling Solutions (CRS), the company that proposed construction in July 2018 of a waste incinerator in Fyshwick, still has until January 2019 to lodge an Environmental Impact Statement (EIS) in support of its proposal. However, a spokesperson has stated publicly that it is no longer the company's intention to proceed with an incinerator.

However, early this year, CRS proposed an alternative; a waste sorting facility next to the railway line, just off Ipswich Street. The proposal has been opposed strenuously, by the Inner South Canberra Community Council, the Griffith Narrabundah Community Association (GNCA), the Old Narrabundah Community Council and the Kingston Barton Residents' Association.

Over 400 submissions opposing a waste facility in Fyshwick have also been made to the ACT Government by Canberra residents and businesses. Reasons included smell, proximity to residential dwellings and the Fyshwick markets, traffic congestion, and inappropriate development of the popular Fyshwick mixed light industrial and retail precinct.

CRS has until mid-2019 to revise its draft EIS by addressing all the concerns expressed by Canberrans. The GNCA will maintain a watching brief.

In this issue

The Fyshwick waste incinerator	PG1
ACTmapi – a treasure trove	PG1
Anti-corruption body in the ACT	PG1
Blaxland and La Perouse Parks and Peafowls	PG2
ISCCC update	PG2
Speedbumps on Flinders Way	PG2
Stuart Flats and Gowrie Court	PG3
17 Lindsay Street	PG3
Plans for a bigger Canberra	PG4
Illegal parking guide	PG4

Will the ACT get an anti-corruption body? Find out at our AGM!

The ACT Government has committed to establishing an Integrity Commission whose principal purpose will be the investigation and prevention of corruption. Proposed legislation has been presented to the Assembly by Mr Alistair Coe MLA, and the ACT Government has published its own version as an exposure draft. A Select Committee on an Independent Integrity Commission is currently considering the issues involved.

Shane Rattenbury MLA, who chairs the Select Committee, has kindly agreed to speak about the proposed Integrity Commission at the Annual General Meeting of the Griffith Narrabundah Community Association.

The meeting will be at the East Hotel, corner Canberra Avenue and Giles Street, Kingston, at 7.00 pm on **Wednesday 24 October 2018**.

The Inner South Canberra Community Council

The GNCA participates in and support the Inner South Canberra Community Council, which represents seven separate Community Associations in Canberra's Inner South (of which GNCA is one).

The ISCCC has a seat at the government's high-level Environment and Planning Forum and is a member of the Combined Community Councils of the ACT. It provides a representative voice to government for the whole of Canberra's Inner South and has been very active on many issues affecting this area. A list of their current activities is available on the website www.isccc.org.au.

The ISCCC meets at 7pm on the 2nd Tuesday of each month at Eastlake Club in Griffith and local residents are very welcome to attend and raise any issues of concern. You are also welcome to attend the Annual General Meeting on Tuesday 13 November at Eastlake.

Friends of Blaxland Park

Friends of Blaxland Park held an inaugural work session on 19 August in the park. It is a new community volunteer group supported by Transport Canberra and City Services (TCCS) and the GNCA. Its main aim is to ensure that the trees in the park grow successfully, especially the new plantings. The convenor of the group is Mac Howell. If you can join future working bees, please contact Mac at machowell@home.com.au. It usually meets from 9-11 am on the 3rd Sunday of each month.



Griffith Woodland Group

The Griffith Woodland Group is also supported by the GNCA and TCCS. Its focus is the preservation of rare remnant vegetation in the open woodland (La Perouse Park) between La Perouse Street, Jansz Crescent and Carstensz Street. The convenor is Libby McCutchan: griffithwoodland@gmail.com. Working Bee volunteers are always welcome!

Narrabundah Peafowl

The ACT Government has convened a residents' committee to advise it on the future management of the peafowl in upper Narrabundah. The GNCA committee representative on the committee is Megan Jeremenko: meganrobj@bigpond.com.

Damaged speed bumps on Flinders Way

The speed bumps installed on Flinders Way in 2012 have reached their use-by-date and the GNCA is petitioning the Government for them to be replaced by more suitable calmers. Even before the speed bumps were damaged, they allowed motorists to continue to drive at 60 km/hr and weave dangerous across the road to avoid the damaged pavement. The road is now so bad some drivers are using alternative routes through Forrest. The GNCA recognises that speed is a critical factor in reducing crash incidence and severity, and is needed on the approaches to the roundabout at the intersection of Monaro Crescent and Flinders Way.

We have recommended that the government:

1. Reduce the speed limit along the whole of Flinders Way to 50km/hr.
2. Remove the bumps at the junction of Flinders Way and Mugga Way.
3. Install traffic calmers like those in Dalrymple and Goyder streets that extend across the whole street at the approaches to the Monaro/Flinders roundabout.



Speedbump on Flinders Way in January 2018 and still not fixed.

We encourage you to support this campaign by reporting damage through the Fix My Street function at Access Canberra.



Goodbye Stuart Flats farewell Gowrie Court

Take a good look at these pictures, because both Stuart Flats and Gowrie Court are scheduled for demolition in the next twelve months. Built in 1959, the Stuart Flats consisted of 29 bedsitters and 117 two-bedroom flats spread over 12 separate blocks varying in height from two to four storeys. Gowrie Court consisted of 72 two-bedroom units in six three-storey blocks. As part of the ACT government's urban renewal program, consultation started on the re-development in 2014. Both are now empty and boarded-up.

The government's plan is to release both blocks to the market in late 2018 or early 2019. The purchasers of the sites will undertake the demolition in accordance with the approved demolition Development Applications (DAs).

They will also be responsible for preparing their own DAs for the redevelopment of the sites in accordance with the Territory Plan – the Narrabundah Precinct Map and Code (for Gowrie Court) and the Griffith Precinct Map and Code (for Stuart Flats).

Although it is expected that all the buildings and structures will be demolished it will be up to the developers to design the redevelopments and determine if all the buildings will be demolished or if some can be incorporated into the new plans. Consequently, the timing of the demolition will depend on the successful bidders' plans.



One of the blocks of the Stuart Flats (top) and Gowrie Court (bottom). Both complexes, built in 1959, are scheduled for demolition.

Are our green places vanishing?

Local residents are expressing concern about the loss of backyard vegetation, as old houses are demolished, and new ones occupy the whole block. Excessive shading of neighbouring dwellings and gardens is a concern to those affected.

The GNCA has made representations to the ACT Government regarding developers that submit Development Applications (DAs) which appear acceptable, at least to those informed of them, only to submit revisions later. Because public notification can be avoided when revised plans are submitted, neighbours are often faced with a *fait accompli*. We are pressing for full publication of all DAs and associated plans on the Government's website, including any revised applications.

If you are concerned about a development in your area, you can contact the Construction Audit Team via Access Canberra to request an inspection by a Building Inspector or Compliance Auditor.

Visit the website www.accesscanberra.act.gov.au or phone 13 22 81.



Easy guide to report illegal parking

Cars parked on verges (nature strips) can damage tree roots or compact the soil so that rainwater cannot easily reach the roots. Some cars park on verges at street corners and block the view, making it dangerous for other road users.

If you are annoyed by someone constantly parking on a verge, or otherwise illegally, you can lodge a complaint to the ACT Government.

See an easy, quick guide on our website.
www.gnca.org.au

The Government is planning for a bigger Canberra

The population of Canberra, which is now 416,000 people, is growing at about 2.15% a year and is expected to reach 500,000 by 2030. The challenge for the government is how best to plan for this growth of about 900 people per year. The present density of population in our urban areas is about 11 people per hectare, about half the density of Sydney. What should be the mix of in-fill and greenfield development to accommodate the additional 100,000 people?

The Greenfield areas to the west and east of the city could provide additional greenfield options (see the Figure on the right). However, this approach would be inconsistent with the government's aim of a more compact city and would result in a continuation of the urban sprawl we have now. Furthermore, the opportunity to sell-off land in these areas might be too much to resist for a government short of revenue.

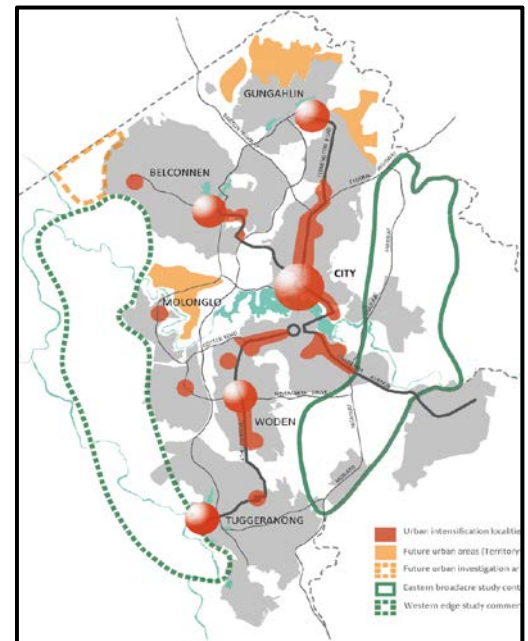
At a workshop hosted by the government in August, the general consensus seemed to be that most of the growth should be at or near the town centres of City, Belconnen, Gungahlin, Woden and Tuggeranong, to be followed by the group centres, such as Manuka and Weston Creek and finally the local centres such as Griffith, Narrabundah and Red Hill, where there are still some blocks in RZ2 zones that could be subdivided.

There was a unanimous view that the green spaces which make Canberra the Garden City should be maintained and there should be enough public green spaces adjacent to the new residential towers being constructed.

There was real concern that urban sprawl could extend to the west of the city where the former Land Development Agency committed \$43 million dollars to purchase 3,274 hectares of farmland.

We encourage you to let the government and the GNCA know what you think would be the best options.

The dotted area west of Molonglo is the Stromlo Precinct. The continuous line on the east defines the Eastern Broadacre Prospect. Both areas could be used for greenfield development.



Keep up-to-date by liking our Facebook page

For the latest updates from the GNCA and around our neighbourhood please like our Facebook page
www.facebook.com/TheGNCA