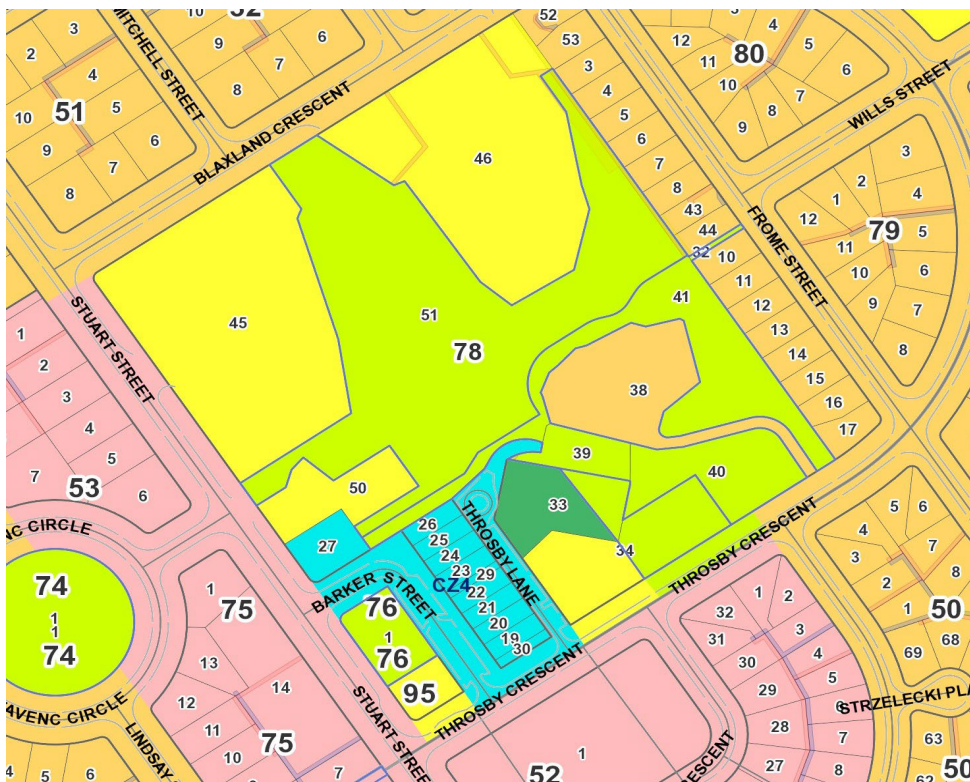


## New Health Centre for Griffith

### Background

In the 2023/24 Budget, the ACT Government committed an investment of more than \$16 million to start the roll out of four health centres, delivering community-based services in South Tuggeranong, West Belconnen, Inner South Canberra and North Gungahlin. We were told that Griffith was selected because it was central to the Inner South, was on bus routes between Woden and the City, was closer to Narrabundah than Manuka and that Yarralumla and Deakin already had a range of health facilities available in Deakin.

The Health Minister Rachel-Stephen Smith met with the GNCA Committee on 13 September and visited three possible sites near the Griffith shops on 15 September with several officials from the Health Directorate and one from the Planning Directorate. We were told the Manuka site (where MOCCA is situated) was not considered suitable.



*Territory Plan for the area of interest. Light Green is zoned as Urban Open Space, Yellow is for Community Facility.*

### The three possible sites all within Section 78.

1. **Block 39**, 1385 m<sup>2</sup>, houses the un-used old Works Depot.
2. Adjacent to **Block 50** (2703m<sup>2</sup>); consider building the health centre close to the current Community Centre.
3. **Block 46**, currently occupied by Blaxland House, which houses M16 and many other groups. The building is fully occupied. The block may be large enough to host the Health Centre close to Blaxland House.

The officials will analyse these three options to assess suitability.

### Some of the key issues

1. It seems from the experiences of other health centres that the block selected should be at least 2000 m<sup>2</sup> (Dickson site).
2. Block 39 would have to be re-zoned from Urban Open Space to Community Facility, but it is currently used as if it were zoned Community Facility.  
This block is surrounded by several large healthy trees that must be considered.



*Aerial image taken in July 2022. Use this with the Territory Plan figure to work out what is on the ground.*

3. Blocks 40 and half of Block 34 (shaded green) are zoned as Urban Open Space. These will be re-developed to house a flood retention basin. This should not impact on Block 39, except the re-located playground may need a new site if Block 39 is used for the health centre.
4. If a site next to Block 50 is used, there would have to be a Lease Variation to create a new block (this happened when the Community Centre was built).
5. We are not sure how Block 46 would work if Blaxland House remained. The officials will work on this option.
6. Parking is a key factor, wherever the health centre is built.

### Future Actions

We will await the analysis by the Health Officials. Please contact GNCA at [info@gnca.org.au](mailto:info@gnca.org.au) if you have any questions or suggestions.

David Denham President GNCA

19 September 2023