

# THE EASTLAKER

Issue 6/June 2019

👍 The-Eastlaker@facebook

✉ inray@theeastlaker.com.au

🌐 www.theeastlaker.com.au

A free, quarterly paper serving the inner south east Canberra suburbs of Barton, Forrest, Fyshwick, Griffith, Kingston, Manuka, Narrabundah, Red Hill

With tree guard away, planner will play/ District News 3

Eastlake community group reports/ Community News 6

Glassworks celebrates all things marbles/ Art+Design 13

Precious box-gum woodland restored/ Environment 15

Dockside executive disrupts owners' motion/ District 4

A 'please explain' for the Planning Minister/ Letters 9

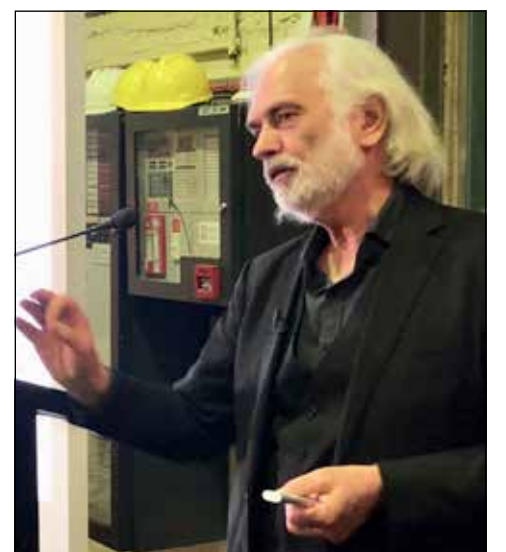
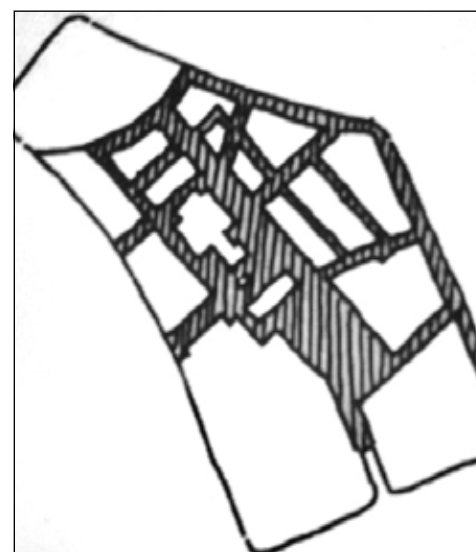
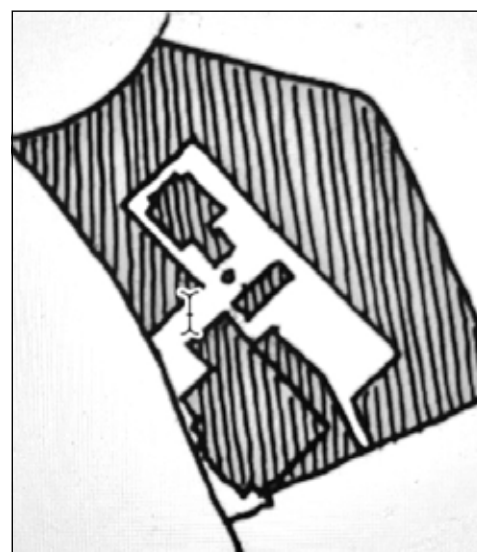
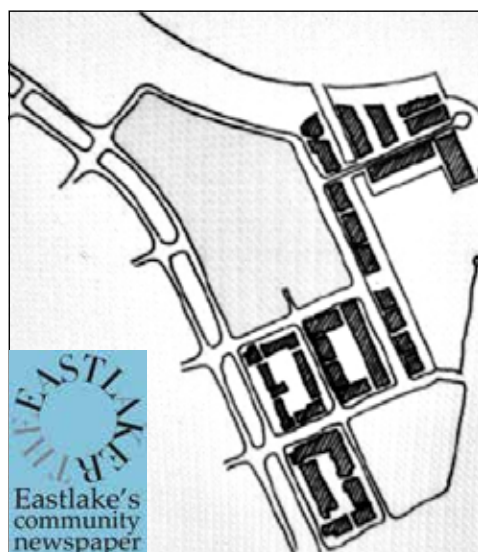
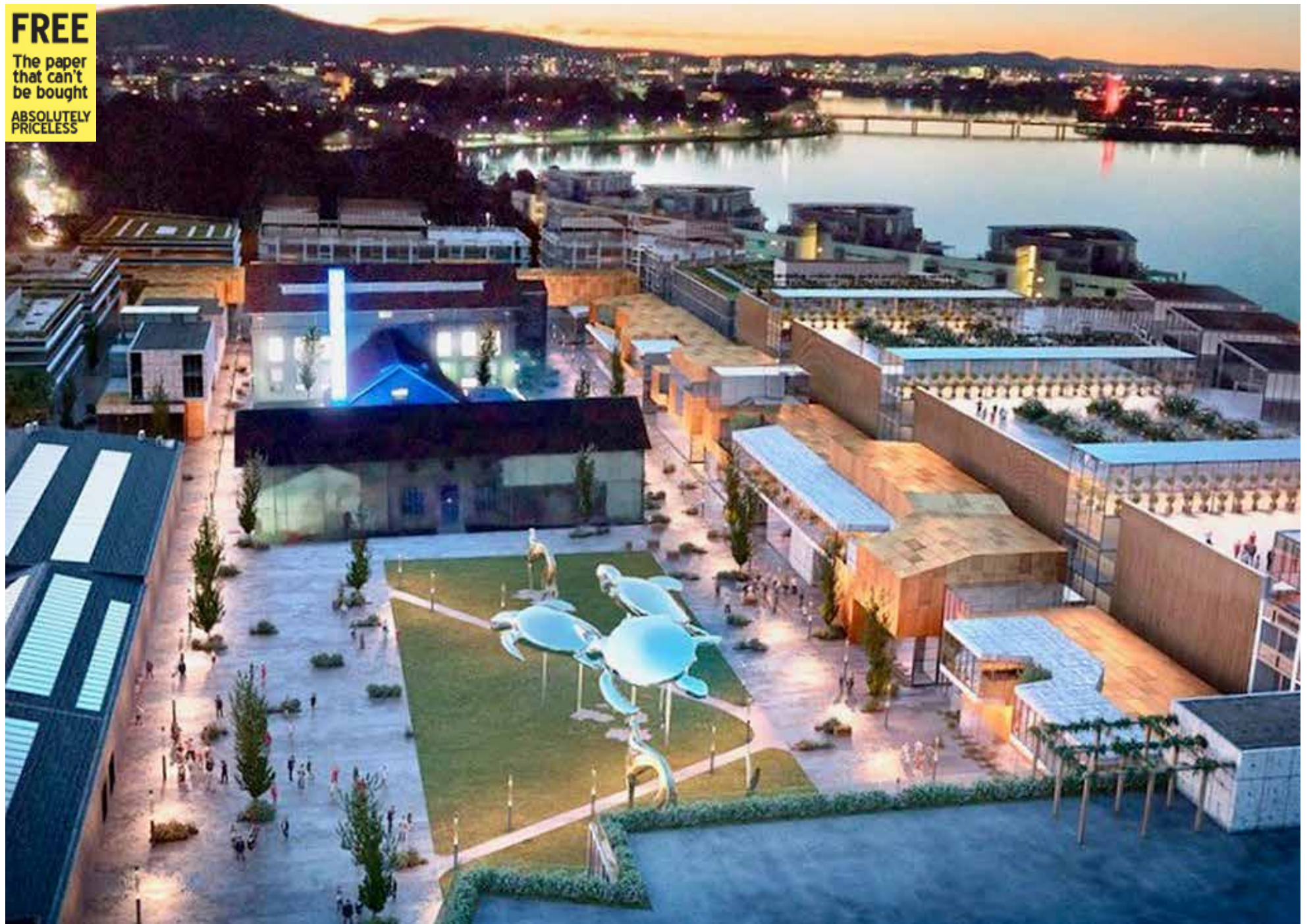
Free concert program at High Court/ Performances 14

Red Hill Tennis Club's winter pennants/ Sports Reports 16

Rather than create one axial view, we formed many local views, to invite the observer in

## Arts precinct to wed past, future

**FREE**  
The paper that can't be bought  
ABSOLUTELY PRICELESS



Birds' eye view of the Kingston Arts Precinct from the south/ diagrams showing existing apartment developments at the foreshore/ existing and proposed buildings for the Arts Precinct and/ connections within the Arts Precinct/ Architect David Sutherland presenting the proposal at a forum » REPORT Page 3

Petition prompts mature tree discussion

Presumably advocating for the developer against their own Conservator

# Conservator sidelined in Manuka Tree appeal



Environment Minister with resident Margaret Williams at the Currie Cres. property

By John Mitchell

A story in the December 2018 issue of The Eastlaker reported the move by the ACT Chief Planner Ben Ponton to join with the developer in an application to cancel protection of the London Plane tree at 15 Franklin Street, Manuka, to clear the way for a hotel development."

In the application, the Chief Planner argued that "the registration of the tree will compromise the broader strategic planning objectives of the Territory Plan." The Planner did not explain how the presence of a tree could compromise the planning of Manuka, whose design was based on the English concept of a 'Garden Village,' nor of the nearby suburbs where public and private landscape is at the heart of their planning. At the time the Planner declined to make his statement available for public scrutiny.

The Tree Conservator Mr Ian Walker took public submissions on the matter, and, importantly also considered a report from the National Capital Authority's Design Review Panel which concluded it could "not support the [hotel development] in its current form as it is not considered to meet key provisions set out in the Manuka Circle Development Control Plan or the aspirations for high quality architectural response in this prominent location." The Panel requested that the design team prepare a revised scheme that demonstrates the long term development of Section 96 Griffith and "consider retention of the Registered tree." The planner issued an approval without taking account of the report

The Conservator made a decision within months, but ACTPLA did not release it until May 2019. Mr Walker formed the view that the community views and the view of the Design Review Panel pointed to compelling reasons for refusing the proposal to cancel the registration. "In my view these compelling reasons rebut the advice of ACTPLA," he said.

The developer was unhappy with the result and lodged an appeal with ACAT, seeking to overturn the decision.

At about the same time the Conservator advised he would be taking annual leave and, apparently, this was agreed by the other parties—the developer and ACTPLA.

Despite the Conservator being unavailable, ACAT, or one of the parties—it is not clear which—decided the date of the hearing should be brought forward. An Acting Conservator was appointed to stand in for Mr Walker.

There is no independent account of how the hearing proceeded. The Griffith Narrabundah Community Association had applied to be a party, but ACAT had overlooked their application and they were refused entry.

ACTPLA's performance at the hearing would have been intriguing, presumably advocating for the developer against their own Conservator. At some stage the parties agreed to have the matter mediated by an independent party. Parties to mediation swear themselves to secrecy on what is said in these meetings but the result is on

» C3

By John Mitchell

A petition signed by 56 Barton and Kingston residents has focussed the ACT Assembly on the importance of retaining mature trees in urban areas.

The petition was addressed to the Executive Committee of a Currie Cres, Kingston, apartment development. The Committee had decided to remove 34 mature trees from the development's garden in preparation for a new landscaping plan.

It noted that removals would have significant impact on privacy, wildlife and the natural cooling effects of shade and impact on the ambience, liveability of neighbouring properties and streetscapes.

It also noted the removals were inconsistent with local community sentiment; the Assembly's concern with the thinning of the urban tree canopy; current research on the benefits of an urban tree canopy in the face of rising temperatures and; the link, of these trees to the planting of the Currie Cres triangle.

The petition asked that the mature tree canopy be retained and that the wishes of local residents be respected.

» C3



The 40 year old plane tree in December and in the final stage of removal



C1 » Petition prompts tree discussion

ACT Environment Minister Shane Rattenbury referred to the petition during a short address to the Assembly three months later. He said that, while the petition was not a matter for debate in the Assembly, it does highlight concerns from residents in older suburbs about the removal of trees from shared spaces and from across the suburbs.

Mr Rattenbury continued, "Members may recall that last year the ACT government commissioned a report from the CSIRO on mapping surface urban heat in Canberra.

"[It found that] neighbourhoods with tree shade canopy of 30 per cent or more can be up to 13 degrees cooler on a hot summer day. » C4

C2 » Manuka Tree appeal

the record. Apparently the Acting Conservator was privy to new information, and agreed to the removal of the tree on condition that the developer conceal the substation, which is replacing the tree, with a 'green wall' and undertake tree planting somewhere nearby.

LETTER / 'Manuka tree removal must be investigated' / Page 9

» C3 This is an extraordinary difference that goes to both quality of life and issues of energy usage and energy affordability in the ACT.

"..Canberra is currently losing on average 7,000 trees per annum. One of the key factors is that we have two generations of trees reaching the end of their natural lives: the exotic trees that might be described as being of the Weston era around the 1920s and 30s, and then a big swathe of the eucalypts that were planted in large numbers through the 60s and 70s. Over the next two decades we will see a significant dying of those trees because of those natural long-term factors..

"It means we need to make sure government lifts its effort to plant more trees across the city to fill the gaps that are there, but it also means we need to work very hard to protect the trees that are there..

"I acknowledge the effort of the residents to bring this issue to the body corporate. I hope that a sensible way forward can be found..

"We need to make sure we have better protections in place to ensure that, going forward, the mature trees in this city are valued more than they are being on some occasions by some parties at the moment," Mr Rattenbury concluded.

**Cafe On Jardine KINGSTON**

Cafe/ Restaurant  
Full breakfast and lunch  
Off site function catering

Open seven days  
Mon-Fri 6am-6pm/ Fri&Sat 7am-5pm  
1/68 Jardine Street, Kingston 2604  
Telephone 0411 882 787

## FORESHORE OWNERS CORPORATION ASSOCIATION

Over the past few years, several representatives of the Owners Corporations located on the Foreshore have met on an informal basis to discuss matters of common interest. At a meeting convened to discuss impacts of the recently announced Arts Precinct development, the group agreed that a more coordinated and formal approach was needed. As a result, the Foreshore Owners Corporation Association (FOCA) was formally incorporated on 2 August 2019. Each Owners Corporation Executive Committee is supported by a management system, generally provided by the respective Strata Manager, enabling the Committees to communicate effectively with owners, residents and lessees within their respective complexes. This distributed approach amplifies FOCA's footprint across approximately 2000 owners/residents resulting in a more concentrated advocacy of the Foreshore area. While the Arts Precinct will undoubtedly be the major development at the Kingston Foreshore over the next 4-5 years, and be foremost in owners/residents' minds in the short to medium term, there will always be on-going matters which will require attention from time to time.

**Chairs of Foreshore Owners Corporations who have not yet given contact details to FOCA are particularly encouraged to get in touch as soon as possible at focasn@gmail.com.au.**

### THE ESSENTIAL INGREDIENT

quality foods • cookware  
culinary books

25 Jardine Street, Kingston 2604  
T 02 6295 7148 F 02 6162 1126  
www.essentialingredient.com.au

Grant will help teachers develop their knowledge about topics and ideas

# St Benedict's Primary picks up STEAM

**Press Release**

After competing against over 1,600 other entrants nationally, St Benedict's Primary School Narrabundah teacher Camille Gerbich, has been announced as the Australian Capital Territory winner of the 2019 OfficeMax and Winc Australia STEAM (Science, Technology, Engineering, Arts, Mathematics) Grants Program.

The annual grants program provides much needed support to schools with resources and funding to integrate STEAM learning. St Benedict's is at the beginning of its STEAM journey providing education for 160 students. Camille applied for the grant to support both students and educators by growing the STEAM program.

"We're thrilled to be awarded the grant. It will help us to create a MakerSpace within the school and purchase new supplies and resources for our students. It will ultimately create excitement and develop a culture of students who want to design, innovate and create," Camille said.

"We also want to support and provide resources for our teachers. As primary school teachers, we are trained as general educators across all subjects rather than experts in a particular field, which can often add to a teacher's apprehension about teaching STEAM. This grant will help our teachers feel confident enough to develop their knowledge about topics and ideas when teaching."

Chief executive officer at Winc Australia Darren Fullerton says the response to the STEAM Grant Bot Program was impressive. "We were blown away by what we've seen from teachers and schools alike. The level of interest in creating more opportunities to integrate STEAM-based learning to help future generations think critically and flexibly to adapt to our rapidly evolving environment is growing year on year."

"Camille Gerbich displayed a true passion for STEAM and she is set to prepare our next generation with the requirements needed to develop a promising career," Mr Fullerton added.

Camille Gerbich, alongside the seven other winners, will receive \$5,000 for her school to spend on her choice of STEAM teaching equipment and resources from OfficeMax and Winc Australia.

"C4 nesses with which we have consulted, are dismayed at what appears to be a conflict of objectives in the long term land use and transport planning for the East Lake to Fyshwick corridor. We call on the ACT Government to clarify its long term planning objectives for that corridor," Ms Fatseas concluded.



St Benedict's Primary teacher Camille Gerbich with some of her students

**P1 » Arts precinct to wed past future**  
By John Mitchell

Kingston Arts Precinct (KAP) architect, Fender Katsalidas director David Sutherland, told the story of a place of visual intrigue and surprise, with a variety of activities that run around the clock, in his presentation to residents, users and anyone interested at the Fitters Workshop on 19 August.

A report explaining the architect's design approach says the KAP's physical presence will celebrate both the Precinct's history and future. "We believe KAP should be unique and distinct, rather than an extension of the existing Foreshore environment.

"The design response illustrates the potential conceptual and physical form of the KAP. It has been shaped by the spatial needs of the artsACT facilities and a public realm that is both the connective tissue and generator for the life of the Precinct.

"In laying out this vision we have thought deeply about the nature of the public realm and the best ways to enhance the presence of the heritage buildings. In

doing so we considered how the buildings related to each other in the past and how this could inform the the Precinct's future.

"Rather than create one axial view, we formed many local views, to invite the observer in. The visitor is engaged in a journey of discovery which reveals the fabric of KAP.

"View corridors from Eastlake Parade are established through a series of laneways, each providing a different composition in which new buildings layer and reveal the old. As one approaches, more is revealed of the buildings, culminating in a full view.

"Gaps in new built form along Wentworth Avenue are positioned to reveal the profile of the power station roof. The activity of the arts facilities forms an enticing foreground. Sutherland explained this approach contradicts the approach taken in the Section 49 Master Plan [prepared as a briefing document for the call for expression of interest from developers] which presents the entire form of the heritage elements to Wentworth Avenue. »P4

## Call for inquiry into Fyshwick waste EIS

By John Mitchell

The ACT Government's mishandling of development applications for a Fyshwick waste facility has prompted a call for an independent inquiry into the Environmental Impact Statement for the project and the long term planning for East Lake and Fyshwick.

More than 100 people attended a forum held by the Inner South Canberra Community Council on Tuesday 11 June 2019 which focused on urban intensification, but also providing an update on the various freight and waste/recycling facility proposals for Fyshwick. Urban Renewal Minister Rachel Stephen-Smith and senior EPSDD and TCCS officials addressed the meeting and the Climate Change Minister Shane Rattenbury also attended.

Representatives of the Kingston and Barton Residents Group (Peter Moore) and the Griffith Narrabundah Community Association (Leo Dobes) provided an update on the proposed Fyshwick waste facilities and the development's proponent, Access Recycling/CRS representative Adam Perry, also spoke.

Following discussion, the meeting overwhelmingly supported a motion that, "... both Health Minister Fitzharris and Planning and Land Management Minister Mick Gentleman establish an expert independent inquiry panel to inquire about the Environmental Impact Statement submitted by Capital Recycling Solutions Pty Ltd for major waste facilities at Fyshwick..."

The ISCCC subsequently resolved to support the motion from the meeting, and their chair, Marea Fatseas wrote to the Ministers asking that the ACT Government establish such an independent inquiry as soon as possible and that the inquiry consider the ecological impact of the proposed waste/recycling facilities, including the impact on groundwater and waterways.

She noted that, at the meeting, they were "given to understand that in the EIS201700053 for a Materials Recovery Facility in Fyshwick, CRS was not required to address the draft EPA Separation Distance Guidelines for Air Emissions..

Ms Fatseas continued, "Importantly, at the public forum the Urban Renewal Minister confirmed that East Lake, between Kingston Foreshore and Fyshwick, is one of the eight areas earmarked for intense urban infill. We request an explanation about why the light industrial character of Fyshwick is being changed in the direction of more heavy industrial uses..

"Media reports last week noted that Fyshwick, a light industrial/mixed use precinct, currently hosts the second largest economy in the ACT, worth \$2.3 billion. Both inner south residents and the Fyshwick busi-»C1

## EASTLAKE'S MARKETPLACE

Each quarter The Eastlaker is delivered to more than 3000 apartments around the Eastlake area and a further 2000 copies are made available for pick up at shops in Barton, Fyshwick, Griffith, Kingston, Manuka, Narrabundah and Red Hill. This coverage makes it the ideal marketplace for businesses wanting to sell goods and services into the Eastlake area.

To find out about our advertising go to [www.theeastlaker.com.au](http://www.theeastlaker.com.au) or call





**Opening Hours:**  
9am to 6pm Weekdays  
9am to 4pm Weekends

TEL: 0282951363  
E-MAIL: [admin@localpressafe.com.au](mailto:admin@localpressafe.com.au)  
ADDRESS: 74/71 Giles Street, Kingston, ACT 2604

FOLLOW US ON FACEBOOK AND INSTAGRAM



**Bulk Food Grocer**  
Healthy Takeaway Lunch & Dinner Cafe

## Kingston Newsagency



All popular newspapers and magazines, together with a large selection of books, stationery, gift wrapping and cards

66 Giles Street, Kingston 2604  
Telephone 02 6295 9132

**ACT to hold directors responsible for defects**



Steel props holding up the structure of the Kingston Place apartments in Eyre Street

By John Mitchell

The ACT Government is planning new legislation that would make directors of licensed corporations personally liable for financial penalties, and requirements for rectification, if defective building has occurred on their watch.

Speaking at an ACT Assembly inquiry into the territory's building industry, which is examining, among other issues, how defects are currently managed in Canberra, Building Quality Minister Gordon Ramsay said the legislation will also give industry and consumers more information and tools to progress rectification work if a building does not meet the standards that Canberrans expect.

The proposal would also provide more options for owners to seek rectification if building quality was not up to scratch and the independent regulator's ability to respond to builders flouting the rules would be broadened, by giving new powers to building inspectors, and introducing court-enforceable undertak- »C3

Without a commitment to funding, no lawyer will take the job

**Dockside Executive disrupts owners' action**

By John Mitchell

A motion, adopted unanimously by members of the Dockside Owners Corporation, to initiate legal action against the building's developer, Doma Pty Ltd and builder Bloc Pty Ltd, to recover the costs of defect remediations has been disrupted by the Executive Committee.

The motion, passed at the AGM in November 2018, was in six parts. The first part acknowledged a list of the defects prepared by consultant, Steve Alexander; the second noted that the developer and builder had not responded to the defects list; the third resolved to commence legal proceedings; the fourth authorised the appointment of legal representation; the fifth gave authority to the EC to appoint other consultants to assist in the action and the sixth authorised payment for the action on behalf of the members. The motion was carried unanimously.

In May 2019 the Executive chair called a General Meeting to consider urgent action including a motion to rescind the levy on the owners, unanimously agreed to at the 2018 AGM.

An explaining note said, "in accordance with the advice received from the builder and current actions in place regarding the resolution of the remaining defects. The Executive committee have agreed to put to the Owners the option to rescind [the sixth part of the motion] and its associated levy as was agreed by the Owners Corporation at the AGM held on 5 November 2019."

The EC Chair separately reported that, as progress had been made towards resolution of all remaining items, they have proposed [this vote].. a AGM. He gave a quick recap of the outstanding items from the defect report prepared by consultant Steve Alexander as follows:

Five items were listed, one of which—water penetration at the expansion joints—is a major defect, which has only partly been addressed. The ground slab has a set down which extends over 2 of the buildings, 5 east to west bays. When it rains water pools in this recess and magnifies the water penetration. Remedial work has been carried out to only one bay on each of the two laneways so the major part of the problem has not been dealt with.

Three other significant defect items, the lift and the grease trap and thermal or structural movement in the level 5 'pod' structures have not been considered at all.

This writer challenged the assertion that the work had been completed and mentioned the outstanding items. It was to no avail and the motion was passed with one dissenting vote.

Asked whether he had discussed the



Dockside laneway during rain with water pooling in the paving recess/ Workmen repairing the part of the slab beyond the paving which is the most affected



settlement with the consultant or received any other briefings, the chair replied "No."

When this writer noted that the passing of the motion would end the legal action, the Body Corporate Manager replied, "That's not what the motion says." This writer replied, "If there's no funding there's no legal action. Without a commitment to funding, no lawyer will take the job."

As things stand, the Executive cannot sign off on the agreement without the consent of the owners. This is likely to be sought at an AGM later in the year. If the owners agree to the settlement they will forego their right to recover any of the cost of what will be very expensive defect remediations.

»C1 ings for rectification work.

The relevant registrar would also be empowered to issue rectification orders for buildings after the first 10 years of their lifespan. »C4

»C3 Mr Ramsay said the Government was also keen to tackle the problem of phoenixing, where builders declared insolvency in order to dodge litigation or debt, only to re-emerge with a new company structure a short time later. He said one option being considered by the ACT Government was allowing orders to be issued to people close to a company that has been dissolved.

"We have all seen instances where building corporations have produced standard buildings, and when legitimately called to account, have wound up leaving the cost of rectification to the owners," he said and added, "There is clearly an additional responsibility of the Federal Government to reduce the negative impact of phoenixing within the building and construction sector."

Two months ago the ACT Labor conference passed a resolution calling on the Government to establish a licencing scheme for building developers. The motion also required that developers demonstrate they could afford to rectify building defects, in an attempt to crack down on phoenixing.

**Joe's Boots**



Canberra's only boot specialist  
Mon-Fri 7.30am-5.30pm / Sat 9am-2pm  
2/ 33 Jardine Street, Kingston 2604  
Telephone 02 6295 6162  
www.joesbootskingston.com

**CONSIDERING A FINAL RESTING PLACE?**

The Norwood Park Crematorium and Memorial Gardens at Mitchell offer a wide choice of memorials and reservations, all set within an attractive garden setting. For more information go to [www.norwoodpark.com.au](http://www.norwoodpark.com.au) or contact our customer relations staff on +61 6241 3177



**Honeysuckle & Lace**



Open seven days 10.00am-5.30pm  
39 Jardine Street, Kingston 2604  
Telephone 02 6239 5726

A brilliant, educational and exciting place to take the kids

# Society has a long and diverse history

By Peter Moore

Another example of the extraordinary assets of the Eastlake area is the quaintly titled Canberra Society of Model and Experimental Engineers (CSMEE) which is now located on an extensive six hectare site at the south end of Jerrabomberra Ave, Symonston.

The site comprises a huge collection of working model trains, rail paraphernalia and buildings, rolling stock, engineering workshops, railway memorabilia and an extensive network of model train tracks in a number of different gauges. All this is open to the public for an extensive program of train and traction engine rides on the second and last Sunday of each month. It's a brilliant, educational and exciting place to take the kids.

The present Society has a long and diverse history of activities and locations throughout the Inner South of Canberra. It was initially formed in 1973 and the small but growing group of original members held their meetings in member's houses and workshops and many of the original members are still among the 80 or so strong group today. Its current membership is aged between 11 years and 80 and a bit.

The society's first track was a small 3.5 inches and only 25 metres long and performed its duty at the Malkara Special School exhibition in 1979, thus beginning a relationship between the Society and Malkara which survives to this day. In 1980 the society established its first 'permanent' track in the Old Brickworks at Yarralumla.

1983 saw the society move to a larger, more suitable site adjacent to Kingston Railway Station and the already existing Australian Railway Historical Society. Thus begun another strong growth spurt for the Society until, by the early 1990s, the main rail line travelled for about a kilometre and paying patrons were able to enjoy an experience which was unique in Australia. But the Society was again outgrowing its site and a new much larger site was required to accommodate the aspirations of its energetic members and patrons.

In 2008 with the support of the ACT Government, which included a grant of \$250,000, the Jerrabomberra site became available and the previous semi-rural, greenfield site has been transformed with the gradual transfer and rebuild of the Kingston assets on the new site. Kingston was finally closed in mid-2017.

The first public running day at Jerrabomberra took place at the end of February 2018 and the extensive and exciting Canberra Miniature Railway is open for business to the delight of children and their parents.



"...open for business to the delight of children and parents"/ Volunteers laying another rail line at the Canberra Society of Model and Experimental Engineers' Symonston site

## P2 » Arts precinct to wed past future

"We believe that locating the new buildings here respects and strengthens the site's heritage characteristics. The power station has not historically had a direct address to Wentworth Avenue or its precedent, Interlake Avenue. Instead, it is a part of a wider cluster of active and varied built form." In contrast to these layered views from outside, from within the Precinct the heritage built form can be viewed from all angles, surrounded by the landscape of the public realm," the report concluded.

At the end of the meeting Mr Sutherland and the developer's representatives took questions from the floor. Here are some.

Q. How high will the buildings be?

Generally four. Some will be less and there will be six storey elements in the building link areas. We are not challenging the existing planning controls.

Q. What hope do you have in influencing changes to Eastlake Pde?

A. I don't think this government will

have a problem with our recommendations. The changes will be small compared to the total internal roads pool.

Q. How will rubbish be removed from the commercial buildings?

A. It will be crazy to have collection at street level. It will be inside the building.

We could share basements between buildings and have a single entry point.

Q. The foreshore is hot and going to get hotter. Illustrations of the project show a large area of grass in the courtyard. Is this wise?

A. We're still working on the brief for the courtyard and sorting out how it will be used.

Q. The current carpark is often overfull, so 500 spaces probably won't be enough?

A. There are currently 300 plus spaces. Each of the additional buildings will have its own carpark. Based on the plans we are showing, there will be a total of 1100 spaces within the KAP. There will be a shortage during construction and staging of the work will be important.

# ACT Health vacillated on hydrotherapy facility

By Peter Moore

The ACT Labor Government wants to close the Woden Hospital hydrotherapy pool, nominating health and safety reasons for this decision.

Last year it was announced, by the then Health Minister, that the pool was due to close on 30 June 2018 but there was a strong negative reaction from the current user community with additional support from a number of assembly members and the general community, because ACT Health had not proposed a satisfactory, viable, therapeutic and locational alternative. As a result the closure was extended to 30 June 2019 with a view that the broad range of negative implications for existing and new Inner South users of the current treatment facility would be examined and resolved and a suitable alternative agreed.

The community, and the pool user groups and their membership affirmed that consideration needed to be given to an alternative short term arrangement and, urgently, to the building of a permanent hydrotherapy public pool, heated to 34 degrees, that could be used for people living in Canberra's south.

The health benefits of hydrotherapy are legion. Properly available, hydrotherapy will; prevent various conditions, maintain health and mobility, provide rehabilitation from illness and trauma and have strong curative effects.

For people with chronic ailments the benefits are enormous. Exercise in a safe environment, at a controlled temperature, provides fitness benefits that keep sufferers from seeking extreme measures to cope with daily life. Chronic pain is bearable, mobility continues, surgery is delayed and sometimes found to be unnecessary and energy levels are maintained so people can cope with everyday demands of living. And depression is avoided.

Effective hydrotherapy is a way of maintaining health and fitness and remaining independent with advancing age. It is also proven to be very effective in accommodating people preparing for, and recuperating from joint, back and muscle surgery.

Most of the conditions helped by hydrotherapy occur within ageing communities who are often challenged by long travel distances to treatment centres.

ACT Health has vacillated and wasted almost two years not making a suitable decision on the building of a proper 'fit for purpose' hydrotherapy facility in the Inner South. This is where the major present and future client base resides. A decision from ACT Health is urgently needed to replace the existing very therapeutic and locationally effective facility at the Woden Hospital.

**45 90 FRAMING GALLERY**  
28 Giles St, Kingston

Beautiful picture frames designed & custom made for you

www.4590.com.au

Your Local Liberals

**Elizabeth Lee MLA**  
**Candice Burch MLA**

kurrajong.mlas@canberraliberals.org.au  
elizabethlee.com.au  
candiceburch.com.au

Get in touch!

Celebrating the values you treasure most

**TOBIN BROTHERS**  
A GUARDIAN FUNERAL PROVIDER  
Honouring Lives

Belconnen 6251 2344 | Kingston 6295 2799  
Tuggeranong 6293 3177 | Queanbeyan 6297 1546

tobinscanberrafunerals.com.au

Bi-monthly report from the Eastlake district resident and community groups

### Kingston Barton Residents Group

#### Kingston Arts Precinct

Representatives from the KBRG attended the Suburban Land Agency briefing on the KAP last month.

After the presentation we asked why the Geocon proposal was allowed to deviate so far from the Kingston Foreshore master plans. We were informed that because none of the Kingston Foreshore master plans had been formally endorsed by the Act Government/ Assembly they actually have no standing. This is disappointing because while master plans have no legislative power they are meant to be a principle and guide for what the community and ACT Government would like to see for a particular area. A lot of energy and money is also invested in their development.

Interestingly, we were also informed that the Geocon tender document is now considered the new master plan, although this has not been endorsed by the Assembly. At the briefing the architects stated that the previous master plans 'informed' their design.

**Concessional lease changes rejected**  
Minister Gentleman has rejected the Canberra Club's applications to remove the concessional leases for the Canberra Club sites at Manuka Oval, Griffith and Blackall Street, Barton. This means that these sites will remain community land and cannot be sold on to developers for private

development. We are not sure if there are appeal rights as these decisions are unprecedented.

#### Manuka Master Plan

As many of you will remember, in 2016 our local member, and Chief Minister Andrew Barr, promised there would be a community panel that would inform a master plan and the future of this iconic precinct. This was in response to the Canberra-wide outcry against the Greater Western Sydney/Grocon unsolicited bid for 800 plus apartments around the oval.

Several community groups have been pursuing the establishment of the community panel over the years and were informed that the panel would finally meet before the end of March 2019. Therefore, we were disappointed at a recent Manuka stakeholder meeting, to learn from ACT Government officials that this promise has been broken and that there will be no community panel or master plan for the precinct.

And just to complicate the information provided above on the KAP master plan, we were informed that master plans will no longer be used in ACT Planning (despite being identified as a key planning principle in the 2012 Planning Strategy) because they do not hold any legislative powers. Instead there will be 'district' plans that may be nuanced to consider some parts of a district in more detail.

Rebecca Scouller/ KBRG Chair



Remediation of asbestos contamination on the Red Hill Flats site/ Kingston Arts Precinct architect David Sutherland addressing the public meeting held at the Fitters Workshop

### Red Hill Residents Group (RHRG)

#### Red Hill Nature Reserve and Surrounds

A meeting to advise residents groups on the reviewed status of the Integrated Plan for the Red Hill Nature Reserve and Surrounds was held on 16 August.

A working draft Plan was presented and discussed, showing that there has been a considerable amount of work done by EPSDD since the previous meeting. There are still considerations to be made, and not everyone around the table was pleased with the progress, but it does appear that the EPSDD is listening to residents in this case. The proposal was certainly a positive step for Red Hill, Deakin and Forrest residents from the perspective of road access and traffic. The next step is a public consultation process, at which time the draft Integrated Plan will be released, and feedback sought.

It certainly appeared to be a more open and encouraging process than the mockery of the 29 July 'consultation,' which had given the illusion of being the Manuka master planning process that was promised prior to the last election in 2016. It ended up being a meeting on the future focus for the inner south, with less than half the suburb representatives invited or in attendance. Sections of the government are getting bolder in holding these blatantly insincere and bogus community consultation meetings, and residents are tired of being used as a tick in the box. Sadly, the next election is on the horizon, with another round of 'promises' being offered, without the previous ones being honoured.

#### Red Hill Flats site

We have an update on the Red Hill Flats site. Remediation discussions required for the bonded asbestos found on site continues. In the meantime, the developers will commence some preliminary remediation works to remove topsoil across the site. This is expected to take 2-3 weeks, and is separate to the main body of site remediation works.

Melissa Bennett/ RHRG President

### Griffith Narrabundah Community Assoc.

#### Manuka plane tree gone

The Acting Conservator for Flora and Fauna reached an agreement with Liangis Investments on 26 July that protection status would be removed from the Franklin Street plane tree. Liangis Investments will reportedly pay for trees to be planted elsewhere in Canberra, and a 'green wall' will be built to shield an electricity sub-station where the tree once stood. Details of the substitute tree plantings are yet to be published by ACAT.

Manuka Village amenity  
Nevertheless, the Griffith Narrabundah Community Association (GNCA) remains committed to improving the amenity of Manuka Village. Back in June this year we wrote to Chief Minister Andrew Barr to outline the scope for repairing unsafe paved areas and footpaths, removal of graffiti, remediation of areas prone to local flooding, possible conversion of part of Franklin Street to a shared car and pedestrian zone, provision and maintenance of more litter bins and new seating in Captain Cook Park and a

revamp of Palmerston Lane.

Chief Minister's positive response  
The GNCA is pleased to report that the Chief Minister has responded positively to our suggestions. Among other initiatives, active consideration is to be given to the removal of graffiti on Endeavour House above the Shell petrol station (with a possible community mural replacement), relaying of pavers and reduction of trip hazards, a review of litter bins and park benches is to be conducted, and consideration will be given to a shared traffic zone on Franklin Street between Furneaux Street and Flinders Way. The Chief Minister's letter also encouraged Manuka businesses to put a proposal together to indicate preferences and related costs for upgrading Palmerston Lane.

**Manuka Business Association**  
We have recently established a dialogue with the Manuka Business Association with a view to future collaboration, including following up on the correspondence with the Chief Minister. Both sides recognise that there will inevitably be differences in approach on specific issues. But we are optimistic about working together to maintain the 'village' atmosphere of Manuka, one of Canberra's major assets. » C4

» C3 Non-profit, volunteer groups like the GNCA are highly dependent on membership numbers if they are to be heard in the corridors of power. Join online: <https://www.gnca.org.au/>

Leo Dobs/ GNCA President

The Eastlaker is published by John Mitchell (ABN 37919034513) PO Box 4703, Kingston ACT 2604 Telephone/ 0429 421 156 Email/ inray@theeastlaker.com.au

**OWNERS CORPORATION NETWORK**  
**Membership of Owners Corporation Network (ACT)**  
**Benefits and Reasons to Join**  
The OCN works to deliver strata owners and buyers:

- 1) Practical and fairer strata legislation
- 2) Better building quality
- 3) Fairer rates and land taxes
- 4) Executive Committee Education
- 5) Good management support
- 6) Opportunity to learn from other owners' experience
- 7) Invitations to OCN Forums

**The Cost**  
Corporate Membership Joining Fee \$5 Annual Fee \$20 per Unit Plan plus \$2 for each Unit Maximum Fee \$600 per year  
Individual Membership Joining Fee \$5 Annual Fee \$20.

OCN is the consumers' voice for all owners and buyers of apartments, town houses or other multi-unit developments.  
For more information to join and to contact us: [www.ocnact.org.au](http://www.ocnact.org.au)

**GNCA**  
Griffith/Narrabundah Community Association

Love living in Griffith & Narrabundah?  
Want to have a say about what happens in our neighbourhood?

**JOIN GRIFFITH NARRABUNDAH COMMUNITY ASSOCIATION TODAY**

Only \$10 a year  
Details on our website [www.gnca.org.au](http://www.gnca.org.au)

Keep up to date by following us on Facebook @TheGNCA

**VOLUNTEERS NEEDED**

**REGISTER NOW AT VINNIES NARRABUNDAH**

See us in store or email [volunteer@svdp-cg.org.au](mailto:volunteer@svdp-cg.org.au)

**Vinnies**

Bi-monthly report from the Eastlake district resident and community groups

**Owners Corporation Network (ACT)**

The most significant recent achievement of the OCN in recent months is the success in addressing Strata Reform Legislation, reported elsewhere in this issue of The Eastlaker.

We continue to:

- Support and lobby for Building Quality Improvement with most recently applying our attention to Building Cladding fire risks and associated insurance issues for Owners Corporations and the professional service providers. We are working with MBA and Strata Managers on these issues and our joint discussions with Government

- Consider how the cladding issues highlighted the need for government Federal and State/Territory Jurisdictions to address issues with all Non-Compliant Building Products (NCPs) often promoted as innovations.

- Consider Rates and Land Tax increases across commercial and strata residential and the impact on the whole ACT Economy. Delays by Government to exercise the proposed reviews agreed by the Government Inquiries suggests this may become an issue for consideration at the 2020 ACT Election.

For Kingston Barton area readers of The Eastlaker, where strata properties house over 80% of the residents, we are discussing joint activity with Community Representatives to represent the particular needs of their precinct.

We are currently planning our AGM together with a Public Forum for early December.

Gary Petherbridge / ONC(ACT) Chair

**Lake Burley Griffin Guardians (LBGG)**

Although many people may think Lake Burley Griffin Guardians are wholly focused on West Basin, the area of our interest includes the whole Lake system including its waters, parklands and catchments. We prepare submissions on all matters that impact the significance of the Lake system.

In recent months we have provided submissions on the proposed Aqua Park, the two EPBC referrals on the Light Rail Stage 2 and the NCP Draft Amendment 92 for proposed ANU development near the entrance of Sullivan's Creek to the Lake. We have regular meetings with the National Capital Authority and recently met with the Hon Nola Marino MP, Assistant Minister for Regional Development and Territories who listened to our concerns.

The West Basin development proposal continues to be our most troubling concern and is now linked to Light Rail Stage 2 (LR2) as it appears to be a major revenue- »C2



“..a seamless high rise apartment canyon from Gungahlin to Commonwealth Ave”/ An ACT Government representative speaking at the ISCC Forum, held at Yarralumla, to discuss urban infill

»C1 raising base for the LR2. The issue for the Guardians is the taking of lake-bed for the development infrastructure, the loss of lake vistas, the loss of natural lake edge habitat, the loss of a strategic public parkland area to primarily, private apartment development.

Thousands of apartments are agreed for construction in a high-rise block on the corner of London Circuit/ Edinburgh Avenue, ensuring a seamless high-rise apartment canyon from Gungahlin to Commonwealth Avenue. West Basin development will extend the apartment canyon towards Commonwealth Avenue Bridge. To retain West Basin as a green recreation park on the LR 2 route for the apartment dwellers is becoming more and more desirable yet not on the agenda of the current ACT Government, the car-park-phobic ACT Greens or the slick CRA planning authority. Instead they are frantically letting the parkland rundown and look shabby- all part of their development strategy.

A most disturbing feature of the West Basin proposal is now the proposed swapping of nationally significant lake-bed land for embassy development land, creating what seems to be a conflict of interest in the »C3

»C2 role of the NCA in protecting the Lake and its surround- a most unfortunate precedent. Pity our poor City and National Capital.

The Guardians website: lakeburleygriffinguardians.org.au has a great deal of information on our advocacy. We are hosting an 'Art at the Lake' day on Sunday 8 September at West Basin, meeting at the jetty at 11am. This event is open to all; experienced or wannabe artists are welcome. More details are on our Facebook page.

Juliet Ramsay / LBRG Convenor

»C4 community panel to help inform a detailed master plan for the precinct remains unfulfilled. A single stakeholder meeting to which the ISCCC and some other groups were invited on 29 July, but to which several other key groups were not invited, could not be considered to have met the election commitment. See https://citynews.com.au/2019/plannings-brutal-behaviour-goes-unchecked/

To keep in touch with upcoming ISCCC events and activities, keep an eye on our website at www.isccc.org.au or Facebook page at @InnerSouthACT

Marea Fatseas / ISCCC Chair

**Inner South Canberra Community Council**

The ISCCC was saddened by the death of long-term committee member Austin Lynch in early July. Austin had been on our committee since it was established in 2010, one of two representatives of the Old Narrabundah Community Council. He had a passion for the history of the inner south, and a strong commitment to serving his local community. Vale Austin.


About 100 people attended the ISCCC's public forum in Yarralumla on 11 June to find out about areas identified for intense urban infill in the inner south, what Government investment is planned in city services to support intense infill, and how the community will be engaged in this process (see report https://www.isccc.org.au/report-on-isccc-public-forum-11-june-2019-whats-the-latest-on-planning-for-areas-of-intense-urban-infill). Nearly 40 people attended our 9 July forum in Griffith on reducing the use of single use plastics, and on the redevelopment of the former public housing site, Gowrie Court, in McIntyre Street, Narrabundah. Copies of those presentations are at www.isccc.org.au.

The ISCCC is disappointed about the decision to move Deakin and Yarralumla from the inner city electorate of Kurrajong to the electorate of Murrumbidgee, which covers Woden, Weston Creek, Molonglo Valley and part of Kambah. These new electorate boundaries will apply for the 2020 ACT election. The ISCCC, and the Deakin and Yarralumla Residents Associations, had made representations in support of keeping these suburbs in the Kurrajong electorate, to no avail.

The ACT Government has passed legislation requiring, from 1 October 2019, developers of new significant buildings to respond to advice of a National Capital Design Review Panel. The ISCCC is very pleased, and had made representations to Government early this year in support of such legislation as a way of improving building design and quality.

The ISCCC has also welcomed the ACT Government's decision to retain the concessional lease status of the Canberra Services Club land next to Manuka Oval. With significant urban infill (already, almost 90 percent of dwellings in Kingston and Barton are apartments), it is important to ensure that there remain sufficient sites for community facilities to meet current and future needs.

With significant development continuing to occur from Manuka to the Kingston Foreshore, including redevelopment on the Stuart Flats site, the new hotel in Franklin Street, Kingston Arts Precinct, there is a need for a holistic approach to planning. The ACT Government's 2016 election commitment to establish a »C3



**Inner South Canberra Community Council**

**Join the Inner South Canberra Community Council and the Kingston Barton Residents Group at a public forum to consider and develop a response to the Geocon proposal for the Kingston Arts Precinct at the Foreshore, with respect to:**

<p>Heritage aspects Alignment with key features of past community consultations/masterplans Feedback from the arts community Traffic and parking issues Public open space and other issues Date: Sunday afternoon, 22 September, 4-6pm Venue: Eastlake Football Club (Duffy Room), 3 Oxley Street, Griffith</p>	<p>an overview of the ACT Government Climate Change and Living Infrastructure Strategies being launched this September.</p> <p>CEO of the National Capital Authority, Sally Barnes, will speak about, and seek community views on, the Authority's Tree Management Policy issues paper that will influence future management of trees in the Parliamentary Triangle and other designated areas.</p>
---	---

**PUBLIC FORUM: 8 OCTOBER: CLIMATE CHANGE AND THE URBAN FOREST**  
Climate Change Minister Shane Rattenbury will provide

**THE ISCCC RECEIVES SUPPORT AND FUNDING FROM THE ACT GOVERNMENT**

**Date:** Tuesday evening, 8 October, 7-9pm  
**Venue:** Eastlake Football Club (Duffy Room), 3 Oxley Street, Griffith



**Forum for apartment and townhouse owners and buyers**

Updates on the ACT Government's ● actions to improve building quality and ● recently announced Reforms for the Strata Sector; the OCN's initiatives on ● Precinct Relationships and Support and ● EC Education and Governance Guidelines and ● an informative presentation on delivery of utilities.

**Monday 2 December at 6pm . at The Federal Golf Club, Gowrie Drive, Red Hill.**

**This forum will be preceded by the AGM of the OCN at 5pm.** Renew your membership or become a member. Purchase drinks at the bar and complimentary hot snacks.

OCN is the consumers' voice for all owners and buyers of apartments, town houses or other multi-unit developments. For more information [president@ocnact.org.au](mailto:president@ocnact.org.au)

## State of Canberra's planning

## The parlous state of Canberra's planning

The third of a four part series examining the parlous state of Canberra's planning.  
Part [3] Inconsistent process

The ACT Government has made some positive moves to improve development approval processes, for example:

- Introducing compulsory pre-development application (DA) consultation requirements for defined, large scale developments.
- Setting up a high level National Capital Design Review Panel (NCDRP) in conjunction with the National Capital Authority (NCA) to provide advice on significant development proposals. This is limited to areas covered by Special Requirements under the National Capital Plan, generally sites fronting major avenues and in Civic Centre. It is intended to incorporate the NCDRP in legislation, hopefully in 2019.

However there are problems with these initiatives and a number of other features of the current processes that make it difficult for observers to be satisfied that development approvals are fair, well considered and will result in high quality outcomes. These problems include;

**Pre-application consultation**

At present the thresholds for mandatory pre-DA consultation are set very high. For example a recent DA for a new six storey hotel on a prominent site in Manuka did not require pre-DA consultation despite its significance and controversial aspects such as the proposed removal of a 'protected' tree.

In my view the current mandatory pre-DA consultation should be extended to ALL DAs in the Merit and Impact assessment tracks and the guidelines for such consultation should be revised accordingly. All DAs in these categories are potentially contentious and pre-DA consultation would assist affected residents understand the proposed development's impacts and seek design changes as necessary before the formal DA processes.

**Design Review Panel**

The ACT Planning and Land Authority (ACTPLA) has been very inconsistent in how it has handled advice from the current NCDRP. For example, in its decision on the DA for the Manuka hotel proposal referred to above, ACTPLA did not refer to the advice of the NCDRP provided to the developer at the pre-DA stage except for one throw away comment: "The Stage 2 development will require pre DA lodgement community consultation, and the design concept thereof will benefit from early presentation to the (Interim) National Capital Design Review Panel for advice."

It is not clear how ACTPLA expected the design concept "to benefit" from the advice of the NCDRP, as the developer clearly ignored the pre-DA advice not supporting the hotel proposal, submitted the same proposal as a DA and had it accepted apparently without question. In its decision ACTPLA ignored the very clear recommendation of the NCDRP:

"The Panel does not support the proposal in its current form as it is not considered to meet key provisions set out in the Manuka Circle Development Control Plan or the aspirations for high quality architectural response in this prominent location. The Panel request that the design team prepare a revised scheme that demonstrates the long term development of the entire Section 96 Griffith and considers retention of the Registered tree."

Further, ACTPLA largely ignored advice received from the NCA on the Manuka hotel DA which supported the NCDRP's comments, on the grounds that the "statutory timeframe for providing advice expired on 26.6.2018." NCA's advice was provided on 4.7.2018, a little over a week 'late.' ACTPLA's decision on the DA was not made until 10.10.2018, more than three months later! NCA's advice was clearly inconvenient to ACTPLA and the developer, despite this site being covered by Special Requirements under the National Capital Plan and being in a prominent location on Canberra Avenue, a



"...a recent DA for a new six storey hotel on a prominent site in Manuka did not require pre-DA consultation despite its significance and controversial aspects such as the proposed removal of a 'protected' tree."

National Approach Route.

Fortunately ACTPLA's performance on some other significant development proposals in Civic and Woden has been better, in that it has had regard to the NCDRP's advice, and hopefully it will not be able to ignore such advice in the future once the NCDRP is incorporated into the planning legislation.

**Public access to DAs, Territory Plan reqts.** Current DAs are generally accessible online. The clarity of information is variable and some details can be hard to read on screen.

The Territory Plan and Regulations are also available online but these are very complex and it is hard to identify all the matters relevant to a particular DA. The applicant's required 'Statement Against Criteria' can be helpful (if done well) but cannot always be relied on.

The Territory Plan needs to be simplified and a property based information system for zonings and relevant provisions should be introduced.

Information on DAs can be difficult to access after decisions have been made on them and they are no longer 'active.' All DAs including decisions need to be archived and made available through the EPSDD website.

**Requirements for DA documentation**

At present the requirements for DA documentation say that the applicant only has to signify they have carried out pre-DA community consultation in accordance with the guidelines. This is insufficient. A succinct report should be submitted by the developer detailing neighbour and community comments and how the design has responded to these. This report needs to be regarded as an important part of DA documentation and be subject to rejection at the DA check stage if inadequate.

The DA application form asks on page 3 for the applicant to "Fully describe your proposal." The descriptions given are usually anything but full and force the reader to interpret complex technical documentation. This is often the case with even quite major development proposals. The full description should contain prescribed minimum information.

**The development assessment track system**

According to the EPSDD website, very few DAs are now considered under the 'Code' track, as many Code compliant DAs (including for single dwellings) are now able to be

Exempted (by private certifiers) or have an "Exemption Declaration" issued by ACTPLA if there are "minor departures" from some Rules (eg. building envelope, dimensions of required minimum open space). This would seem to suggest the 'Code' track could be dispensed with, to assist in simplifying the system.

However, there is a particular problem with new dwellings replacing existing dwellings, where the impacts on streetscape and neighbours' amenity are often not adequately considered. All such DAs (ie. the redevelopment of blocks for one or more dwellings) should be in the 'Merit' track.

**DA e-lodgement and tracking system**

The current tracking system does not provide much information about progress throughout the DA process. More detail on assessment stages, referrals etc would be helpful.

**Processing times for DAs**

Statutory DA processing times do not seem to bear much relation to reality. It is not clear what is the purpose of the statutory times, apart from performance reporting and giving the applicant an appeal right if the DA has not been determined within the set time (a right which seems to be rarely, if ever, exercised).

**Retrospective DAs**

Permitting developers to lodge a 'retrospective' DA, usually to rectify unapproved work, should be discouraged by penalties and applications should go to the back of the queue. Retrospective approvals can be used to by-pass normal requirements (such as pre-DA community consultation) and this puts undue pressure on the assessment process to approve substandard design and building work.

**Reconsideration and appeal processes**

It is not clear why there should be an opportunity for reconsideration after a decision is made on a DA. Pressure should be on the applicants to get their DAs 'right' and for the planning authority to make well based decisions. On the other hand appeal processes have become very legalistic and expensive and a return to the earlier specialist planning and land tribunal would be welcome.

**Heritage, Tree Protection, Environmental assts.**

It seems to be too easy for the planning authority to ignore expert input on these

## Looking the gift horse in the mouth

By John Mitchell

There are three ways of funding and managing the creation of public infrastructure, be it railways, hospitals, schools, concert halls or museums and art galleries; public, private and a hybrid of the two— public-private partnerships— for funding, or constructing the project, or both.

The approach taken by the ACT Government is unusual, if not unique, in that the developer is completely in charge of determining the brief, the nature of the development and the benefit to be handed to himself on the one hand, and the community on the other.

The project started with a master-plan, showing a network of roadways and pathways for access, the existing heritage buildings and their curtilage criteria, and a notional layout of new buildings was prepared, together with a functional brief for the arts organisations taking up accommodation.

Local developers were then invited to present proposals which were assessed by the Land Development Agency (LDA) behind closed doors.

Three developers, including Geocon, were chosen to further develop their proposals. Again the assessment was made behind closed doors. In March 2017 Geocon was announced as the preferred tenderer.

The LDA regretted that no details could be provided— not even artists' impressions— until a suite of contracts between the developer, the government and the users had been signed in six month time. The negotiations with the users were also behind closed doors with the prospective tenants sworn to silence. The contracts were finally signed 2½ years later and the public were invited to consultation sessions, conducted by the developer.

At the first session, held at the Canberra Glassworks, the architect David Sutherland of Fender Katsalidis, a practice with an enviable reputation, described a precinct of considerable promise but pointed out that the scheme was still very much schematic, with detailed building design yet to start.

Those with long experience of this government, and its stable of preferred developers, are understandably wary. They note that the footprint of the development is well in excess of the original master plan and that the density of development reflects, not so much a desire to make intimate and engaging spaces, but to squeeze the very last dollar out of the development. They say it is now best described as a major >>>P9

matters and for non-executive officers to make decisions that heritage requirements listed as 'mandatory' are not important.

Any decision to overrule a mandatory requirement in legislation should be exceptional and should be considered by a senior executive and reasons for the decision should be given in writing. A mandatory requirement in legislation surely means that the requirement must be complied with.

Any decision to set aside specialist heritage advice should also be made by a senior executive and be given in writing.

If ACTPLA does not accept entity advice it should be required to provide a detailed and convincing reason for it. It is not good enough to say the Act allows the minister to override the advice - there should be a good reason for it. Nor should entity advice which arrives outside the "statutory timeframe" be able to be simply ignored.

By Richard Johnston/ Life Fellow Planning Institute of Australia/ Kingston Barton Residents Group committee member



## Lip service to planning/ Please explain/ Ring a bell or call/ Investigate tree removal/ Tax not revenue neutral

The Eastlaker publishes without fear or favour, but writers are encouraged to deal with issues, not personalities.

## Paying lip service to best practice planning

Despite committee hearings on building quality and development application processes lip service continues to be paid to best practice planning. A pattern of high handed pro-developer and anti-community planning decisions made over recent years is exacerbated by planning systems and processes that are difficult to access and are unreliable and expensive to challenge. These impediments fundamentally undermine public confidence and meaningful community engagement.

Pro-developer decisions on the Kingston Foreshore Sapphire Development have had a chilling effect on community groups and individuals with the financial cost of opposing plans prohibitive. Likewise attempts to make anonymous decision makers accountable for poor decisions has become a very disappointing game of bureaucratic pass the parcel.

'Technical variations' exercised by the Government on behalf of the Sapphire developer effectively added a fifth and sixth floor to a site approved as a four story mixed use development. The contempt shown by the Government for the community in exercising this technical variation also highlighted a tokenistic and ultimately dismissive approach to community and individual engagement and opinion.

An amendment to the Sapphire consent, currently being considered, will allocate basement visitor parking to particular units. Through re-allocation of additional parking spaces to units the developer will be able to command a higher price for those units. Visitor parking will be squeezed onto the street, and into a new carpark being built in a reserve beside the Jerrabomberra Creek, and will impact local residents. This externalisation of cost on to the community is unacceptable and effectively diverts public land into private profit.

We should be able to expect our elected representatives to look after our interests in a balanced way. We should not need to be vigilant against the dynamics of developers and politicians who talk about participation but deliver to their own agenda.

**Bobbie Vanduren/ Kingston**

**P8** Looking the gift horse in the mouth mixed use development with an arts precinct attached.

Some time ago the government told the public that they would be paying the developer \$70 million and in return would receive an arts precinct and car park. The government must now give the public a full account of what benefit all the parties (including the developer) will receive.

They must also give an undertaking that the contracts will give protection against developers' tricks of the trade including \*financial failure and phoenixing of the developers operation \*sidelining of the design architects \*inadequate documentation of trade contracts leading to uncertain court outcomes and \*the developers right to deliver 10% less than the contracted building area.

Finally, they must ensure that the community's concerns that the heritage significance of the site is properly considered and not left to an uncaring planning department to negotiate.

Sources close to the developer say that he wants this building to be his redemption, leaving a legacy as an enlightened philanthropist. The downside is if the project turns pear shaped, it will be seen as perdition, not redemption for both the developer and the government.



"Technical amendments effectively added a fifth and sixth floor to a site approved as a four storey [building]/ "Visitor parking will be squeezed onto the street and into a new carpark being built in a reserve beside the Jerrabomberra Creek.."

## A 'please explain' for the Planning Minister

Earlier this year, at a hearing of the Legislative Assembly's Inquiry into Engagement with Development Processes in the ACT, the Minister for Planning said there was demonstrable 'community support' for the move to private certification. Really?

I vividly recall a particular meeting of the Manuka LAPAC (Local Area Planning Advisory Committee) - Held at the Italo Australian Club in Forrest. Towards the end of meeting, the then Chair, Rob Purdon (co-founder of Purdon & Associates) presented a document which indicated the government's intention to move to private certification in the ACT. The document had been prepared by Purdon & Associates.

There was immediate disquiet about the lack of warning to committee members, the fact that there was no time to discuss the move (it appeared to be a 'fait accompli'), and the community consequences of such a move. The concerns expressed were compelling!

Subsequently, one of the first initiatives of the Labor Government, which won power in 2002, was to abolish the LAPACs. The years of cultivating representative, well informed community voices was abolished. Then, in 2005, the government took further steps to 'streamline' the development application process. The timeline for approvals was reduced, the code track was expanded, » C3

## Ring a bell or call 'bike' when passing

Walking around Late Burley Griffin is one of the many pleasures of living in South Canberra.

I realise that bike riders have every right to use shared pathways, but I'm putting in a plea for us poor, and sometimes, elderly pedestrians.

It helps greatly if riders travelling at 30 kph, or perhaps more, think to ring a bell or call out "bike" when approaching pedestrians from behind.

The gesture is always greatly appreciated.  
**Jill Nelson/ Kingston.**

» C2 and third party appeals which were already restricted, were limited further. Technical Paper 3- Planning System Reform Project which outlined, the program noted, "The Building Act 2004 requires the Authority to check and verify that a completed construction complies with relevant development approval conditions that apply to building work. To address delays in obtaining this check, it is proposed that qualified private assessor be permitted to perform this function," and noted, "The proposed reforms should result in processes which.. meet the needs of the ACT community."

It is chilling for the ACT community to read these particular documents with the benefit of hindsight.

The concerns expressed on that night of the Manuka LAPAC meeting, were based solely on observations borne out of members' personal experience with planning and building up until that time. They could not fully anticipate the problems which have come to light in the intervening years, partly due to the abandonment of the public inspection and certification processes, and largely due to the governments failure to regulate the new system.

The list of problems are escalating. Our city, like most other Australian cities, is now home to multi unit developments which have long lists of defects; major and minor structural failures, leaking roofs and floors, flammable cladding to name a few. They will cost millions of dollars to rectify and, with developer/ builders able to avoid responsibility, the owners are left in an intolerable position. In the last week alone there have been reports of newly constructed student accommodation at the ANU being vacated long term due to ongoing water damage, and of a fire on the outer wall of a Glebe Park complex being attributed to flammable cladding.

Another unanticipated consequence is that private certification has resulted in the approval of rebuilds on 'Mr Fluffy' blocks in Heritage Precincts in the inner north and the inner south of Canberra which trash the mandatory requirements of the Heritage Act.

Minister Gentleman, will you please explain who is the 'community' you say supported the government's move to privatise the approval and certification processes and how did they 'demonstrate their support'?

**Anne Forrest/ Griffith**

## Manuka tree removal must be investigated

I refer to the article 'Tree at centre of Manuka controversy finally comes down' (Canberra Times 1.8.2019).

I believe there needs to be a thorough review of this sorry saga, particularly the actions of ACTPLA and the 'mediation' process by ACAT.

My concerns are:

\*ACTPLA essentially ignored the advice of both the National Capital Design Review Panel and the National Capital Authority in approving the hotel proposal, subject to removal of the tree's registered status;

\*ACTPLA then supported the developer's application to cancel registration of the 'protected' tree and advised the Conservator of Flora and Fauna that 'registration of the tree will significantly compromise the broader strategic planning objectives of the Territory Plan,' which is an absurd proposition and based on selective and unconvincing references to the Statement of Strategic Directions in the Plan and the Manuka Circle Development Control Plan;

\*The Conservator thoroughly considered the application over a six month period and in a detailed decision declined to cancel registration of the tree, not accepting ACTPLA's advice;

\*Nevertheless, at a closed 'mediation' session under ACAT between the developer and the ACT government, where the other parties to the appeal including the Griffith and Narrabundah Community Association were excluded and the Conservator was replaced by an 'acting' Conservator, it was agreed to cancel registration of the tree and allow its removal, which the developer immediately proceeded to do.

It appears that the 'Tree Protection' legislation and the supposed independence of the Conservator of Flora and Fauna is a sham and that ACTPLA is not objective and professional. This whole matter must be thoroughly investigated.

**Richard Johnston/ Kingston**

## Barr's tax reform is not revenue neutral

Inner South residents- and apartment dwellers in particular- are once again hardest hit with increases of up to 18% in our area. This latest increase is on top of compounding increases from previous years.

Despite promises that the government's tax reform would be revenue neutral and stamp duty would be abolished, rates revenue has increased by \$443 million, and stamp duty remains for all but select "eligible" first home buyers (facts the Labor-Greens Government often forget to mention).

Adding insult to injury, changes to the way apartment rates are calculated was never part of the original tax reform plan. These increases have been huge, and are having significant impact on retirees on fixed incomes who have recently downsized, and young renters just trying to get ahead.

This begs the question- what is the Inner South actually getting in return for our skyrocketing rates bill? Our local shops are neglected, constant calls for improvements to street lighting, footpaths and parks are ignored, and the Labor-Greens Government consistently fails to enforce its own zoning, development and heritage regulations in our suburbs. The Inner South has seen a lot of development in the last decade, but without the investment in infrastructure or local facilities to match.

Across Canberra, our health system is in crisis as surgery wait times go up, our Emergency Department has been on bypass twice this month alone, and our schools consistently fail to meet national testing standards.

In recent estimates hearings, Andrew Barr confirmed there was no end in sight for rate rises like this. Many Canberrans are really feeling the pinch, and we are seeing thousands of young families move over the border.

Local government should be about serving the local community- not about pet causes and special interests.

**Candice Burch/ MLA for Kurrajong**

Events around Eastlake/ Forgotten Arts Expo/ High Court concerts/ Jeans for Genes fundraiser

### Forgotten Arts Expo at Fitters Workshop



An expo of Forgotten Arts was held at the Fitters Workshop, during the Canberra Heritage Festival/ Part of the crowd/ Cabbage tree hatmaker Sue Brien/ Taxidermist Lucia Mocnay / A french polisher

### High Court concerts for June



The June concert offerings at the High Court included Mimosa Duo/ ANU Open School of Music/ Andrew Blanch and Ariel Nurhadi/ Choir of Trinity College, Melbourne

### Jeans for Genes cocktail fundraiser at Winnings



Winnings made their showroom available for a cocktail fundraiser for the Canberra Committee of Childrens Medical Research Institute. More than 150 guests attended and \$8500 was raised/ Guest speaker, researcher Dr Anai Gonzales Cordero, addressing the guests/ Committee chair Jane Beer and her committee/ The champagne bar did a strong trade/ Phillip and Patricia Mulcare with Dorothy Rowlands and Ian Robertson

**CREATIVE AURA**  
Unique home and giftware



Open 7 days  
Shop 30, Cusack Centre  
Green Square, Kingston 2604  
Telephone 02 6295 1311



**Super-Tasty Home-Style Dinners**  
**Hand Made by Real Chefs**  
**Ready to Just Heat & Eat**

Available from  
**Prohibition Bottle Shop**  
Cnr Giles Street & Eastlakes Parade, Kingston Foreshore  
[www.dinnerready.com.au](http://www.dinnerready.com.au) for menu and more info

*Stephanie's*  
Elegant & Sophisticated  
Expert bra fitting service



24 Jardine Street, Kingston 2604  
T 6295 0469 F6297 7744  
E [stephanies@vergola.com.au](mailto:stephanies@vergola.com.au)

Arts Precinct presentation/ High Court concerts/ Media Freedom call/ India Talk

# Arts Precinct presentation at Fitters Workshop



Representatives of arts, resident and heritage organisations packed the foyer at the Canberra Glassworks to hear a presentation on the Kingston Arts Precinct by architects Fender Katsilidas director David Sutherland on 2 July/ Rebecca Scouller, Elissa Singer and David Denham/ Eric Martin and Graham Carter/ A bird's eye view of the meeting

# High Court concerts for August



The August concert offerings at the High Court included Canberra's Gay and Lesbian Qwire and the I Progetti Chamber choir

# Media Freedom@Parliament House



A gathering of 70 'Friends of the ABC' attended the 2019 Defend Media Freedom Lecture, at Parliament House with Federal Member Andrew Wilkie as the main speaker

# Different perspective of India@MCH



Kim Russell told a gathering at Manning Clarke House of the Stump Jump Foundation's work to build agricultural skills for lasting benefits in India

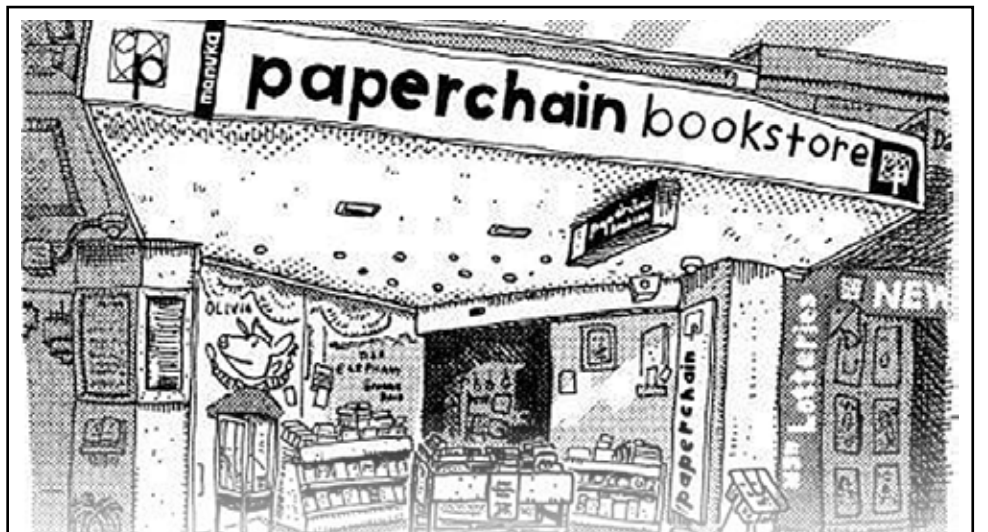


Awarded 'Best Bottleshop in Australia, the Plonk Beer and Wine Store. ● Over 1300 beers are stocked, from craft breweries throughout Australia and more than 60 other countries.

- A range of 150 ciders from England, France, Spain, Belgium, Sweden and Australia is the largest in the country. Still, sparkling, sweet, dry, medium and oak aged ciders made from apples, pears and raspberries; they have them all!
- The largest range of local Canberra District wines, along with an eclectic range of over 1000 hand selected wines.

A 10% discount is offered on mixed buys of six or more bottles (apart from specials) and bigger discounts on mixed case buys; something that no other bottle shop can do. An online purchasing website is now up and running, with great deals on offer if you can't make it to a Plonk store.

**Plonk is at the Fyshwick Markets (Tel 6260 6336)**



**Canberra's Leading Independent Bookstore**

Opening Hours/ Sunday-Thursday; 9.00am-8.00pm/ Friday and Saturday; 9.00am-9.00pm  
34 Franklin Street, Manuka/ Phone; 6295 6723/ Email; books@paperchainbookstore.com.au

Main attraction of the day was the giant Marble Run

Plastic Fantastic/ How to find yourself in a world of images

## Glassworks celebrates marbles

## Two shows at Photo Access



Glassworkers fascinated the public gallery as they turned molten glass into magnificent objects/ Participants making art from glass pieces (photo by Nathan Harradine-Hale)

### Plastic Fantastic

Shot with vintage cameras from local artist and art historian Nigel Lendon's private collection, developed with hand-made sixties chemistry and printed on period papers, this group exhibition by Baldwin, Gamarra, Gray and Matthews documents their investigation into how plastic technologies first enabled a dynamic vernacular photography and possibilities for future lives for obsolete plastic objects.

The exhibition is showing until 8 September 2019.

### How to find yourself in a world of images

Presenting new work created during a recent PhotoAccess residency, Kirsty Macafee's striking exhibition explores the fluid condition of contemporary images. Departing from a single 'Find My Phone' screenshot, Macafee integrates darkroom, digital and craft processes to investigate how images flux between data and object and circulate across time and space, providing an unstable truth but also endless possibilities for connections, relationships and identities.

In the first days of her residency at PhotoAccess, reflecting on the temptation to investigate what her children were up to back home in Melbourne, Macafee ran her 'Find My Phone' app. She took a screenshot of the resulting satellite view of inner south Canberra. This image- de-constructed into data- became the core material for each of the works in this exhibition.

The exhibition is showing until 28 September 2019  
Press Release



Kate Matthews, 'Montages iii,' 2019 / Kirsty Macafee, 'World,' 2019

## Spring exhibitions around Eastlake

Floriade. Most Canberrans are hanging out for Spring to arrive, sick of being cold and well and truly ready to schlepp down to Floriade and smell the flowers. While this isn't exactly a performance or an exhibition, we'll include it here because it is a thing of beauty not to be missed. It runs from 14 September to 13 October 9.30am to 5.30pm with Nightfest from 3 to 6 October 6.30pm to 10.30pm. We love Nightfest and also usually manage at least two daytime visits to Floriade. We are so lucky as Canberrans to be able to visit this free event as often as we like <https://floriadeaustralia.com/program/>

National Portrait Gallery. Hooray! The NPG reopens on 14 September. Of note for fashionistas and those interested in photography:

Women in Vogue -Celebrating 60 Years in Australia This exhibition showcases 60 years of the Vogue Australia archive together with a special tribute to some Australian women who have featured in the pages of Vogue, and includes well known portraits of Kylie Minogue and Elle Macpherson. You can also see rare examples of archived magazines, from the early decades of publication through to bold photographs of women of the 21st century. (Friday 11 October until Sunday 24 November )

National Gallery of Australia. Matisse & Picasso Drawn from some 40 important international collections, Matisse & Picasso shows how these two pioneers of Modern Art both shared the need to confront the challenges set by the paintings of Paul Cézanne and mined each other's work to enhance their own (13 December 2019 - 13 April 2020).

Living Arts Canberra is a not for profit Canberra region online arts and community destination with

By Gabe Trew

Canberra Glassworks opened their doors for a day of fun located in the historical Kingston Powerhouse- and what a day it was!

Families were able to explore the entirety of the Glassworks and celebrate all things marbles for the day. The winning entry from the Kids Design Competition was created on the day in the Hotshop, bringing alive the drawing of winner, Ella Redmond.

The day was abuzz with family and community as they engaged with the wonderful classes and workshops. These included marble painting for the kids (and kids at heart) as well as Make Your Own glass tiles, traditional games of marbles and historical tours.

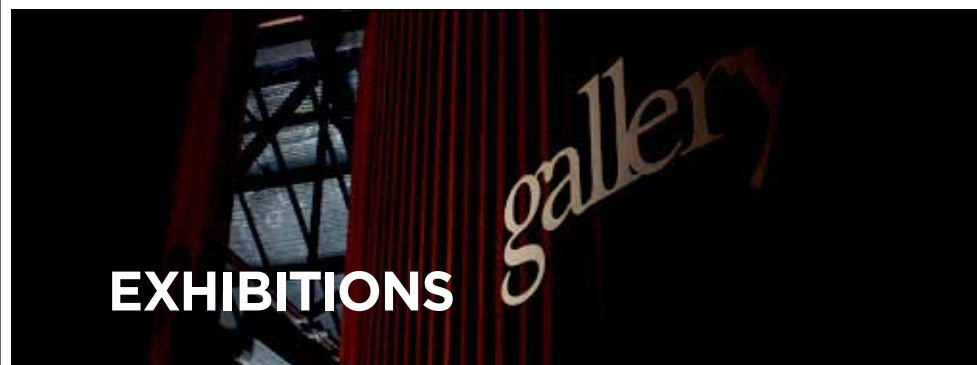
The main attraction of the day was the giant Marble Run, designed by Emeirely Nucifora-Ryan. Marbles are placed in the carriage and ascended metres into the air as a wooden handle spindle is turned. The marbles then cascade through a series of winding tubes, spinning and falling through the giant metal structure past neon tubes and then shooting out on the ground.

The Marble Run is still sitting proudly in the Canberra Glassworks foyer and can be enjoyed by purchasing a bag of marbles and spending fifteen minutes watching as they wind through the beautiful structure.

Handmade marbles were specially created for the day and have been such a hit that they are still available to purchase in the Canberra Glassworks shop, Gather.

Canberra Glassworks hosts a selection of workshops, Make Your Owns and Tours which can be found at [www.canberraglassworks.com](http://www.canberraglassworks.com)

» C1 website, podcasts and internet radio stream. Find radio interviews and information about visual and performing arts, film and writing, festivals and community events. [www.livingartscanberra.com.au](http://www.livingartscanberra.com.au)  
Barbie Robinson and Richard Scherer



### UNION

Jamie North

From 5 September to 20 October

### OCCUPYING LIGHT

Richard Whiteley

From 5 September to 20 October

### KLAUS MOJE AWARD

From 21 September to 12 October

### JAMFACTORY ICON

Clare Belfrage: A Measure of Time

From 7 November to 19 January

11 Wentworth Ave, Kingston  
T 02 6260 7005  
[canberraglassworks.com](http://canberraglassworks.com)  
Open Wed to Sun, 10am to 4pm



Sydney Printmakers and Megalo Members

# 'Borderless' & 'Press v Screen'



'Borderless' and 'Press v Screen' and will be showing at Megalo Gallery during September and November.

'Borderless' is an exhibition of selected works by members of the Sydney Printmakers group responding to the theme 'borderless.'

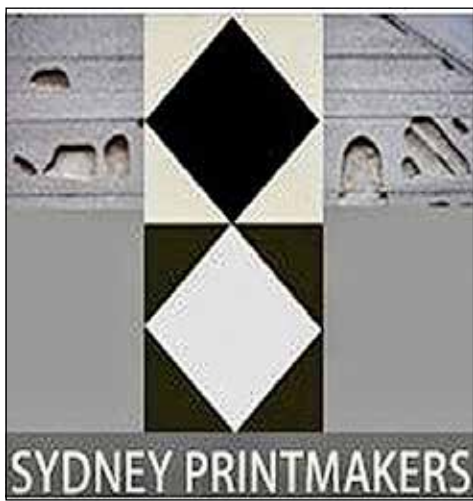
The exhibiting artists include Susan Baran, Anthea Boesenberg, Rafael Butron, Neilton Clarke, Carolyn Craig, Tanya Crothers, Barbara Davidson, Rew Hanks, Nathalie Hartog-Gautier, Salvatore Gerardi, Angela Hayson, Nina Juniper, Roslyn Kean, Carmen Ky, George LoGrasso, Graham Marchant, Seraphina Martin, Bernhardine Mueller, Helen Mueller, Janet Parker-Smith, Ben Rak, Sandi Rigby, Marta Romer, Susan Rushforth, Anna Russell, Gary Shinfield, Laura Stark, Anne Starling, Wendy Stokes, Andrew Totman, Thea Weiss, Olwen Evan-Wilson and Sharon Zwi.

'Borderless' opens on Saturday 28 September and runs to Saturday 2 November 2019.

Press vs Screen is Megalo's annual end of year exhibition. Megalo Members submit prints that they have produced in either the Press or Screen studios at Megalo during 2019. Which studio will reign supreme this year?

The exhibition will open on Saturday 9 November and continue until Friday 13 December 2019.

Press Release



Angus Fisher, Collection Tray No.23, 2019/ The poster for the Sydney Printmakers exhibition

Sashiko stitching ticks many boxes for sustainability

# Sashiko. A little stitch in time

Centuries ago, people in rural Japan used little stab stitches, sashiko, to strengthen, patch and mend- extending the life and use of textiles and clothing. Most importantly sashiko is visible mending; the repair is celebrated. It is a very simple and elegant art, its roots going deep into Japanese history and culture. Breakage and repair are treated as part of the history of an object, rather than something to disguise.

'Sashiko. A little stitch in time', an exhibition at Altenburg & Co in Braidwood by Mary Taguchi's Mingei Studio, presents a marvellous selection of old and new garments and cloths celebrating the power and beauty of the sashiko stitch.

Always seeking the historical skills and knowledge of Japanese craftspeople, Mary Taguchi has very recently been in the mountainous countryside of Japan where sashiko stitching is part of farming people's lives; on local trains and buses, through lush green forests, gushing rivers, rice paddies, thatched houses- just where the sashiko stitch mending will be going on.

"I needed to work with the genuine craftspeople, with the right tools, the right instruction and hear their wisdom. Perfection is not sought, rather it is what happens and comes naturally. Textiles have four lives; an initially fine garment can become everyday dress, then a bed cover and lastly dust rags, zokin."

The exhibition will be opened on Friday 13 September at 6.00pm by art historian Dr Anne Sanders and will continue till Sunday 6 October 2019. Altenburg & Co is open from Thursday to Sunday 10am to 4pm and is located at 104 Wallace St, Braidwood. Mingei Studio has an extensive website at [www.mingei.com.au](http://www.mingei.com.au) and can be contacted on 0412 480 254.

Press Release



A stitching piece in progress and the stitcher Mary Taguchi



MARY TAGUCHI / MINGEI

さしこ sashiko  
a little stitch in time

on beautiful one-off jackets, cloths, bags

Altenburg & Co, Wallace Street, Braidwood NSW

Friday 13 September 2019  
Opening 6pm

Exhibition continues until Sunday 6 October 2019

02 4842 2545 / 0412 480 254 Mary

## Exhibitions at M16 Artspace



Spring exhibitions at M16 Artspace include explorations of nature and its importance for well-being in Restoring the Balance with work by Kerry Shepherdson, Narelle Phillips, Di Broomhill and Leo Robba. Benita Tunks looks at the collapse of bee populations in her installation Collapse. Keith Bailey, Lex Beardsell, Ian Robertson, Alan Howard, Cherylynne Holmes, Jane Styles show in Surround Us (26 September to 13 October) and work by Diane Mc Phetres, Rodney Moss, Neil Lade and Trevor Sutton can be seen in Seeing Differently (17 October to 3 November). Check the website for new exhibitions <https://www.m16artspace.com.au>

Your regional online arts & community destination

Podcasts • interviews • event calendar • internet radio

Read and listen at [livingartscanberra.com.au](http://livingartscanberra.com.au)

Email [team@livingartscanberra.com.au](mailto:team@livingartscanberra.com.au) for coverage of your event

*Living Arts Canberra*

Court atrium inspires awe and has admirable acoustic quality

## Free concerts at High Court



By John Mitchell

Like a medieval cathedral, the cavernous atrium of the High Court of Australia instills awe in visitors. It also provides an admirable acoustic quality and, on many Sundays of the year, the judges of the court allow the atrium to be used as a venue for free concerts for the public's enjoyment.

A program for the concerts is provided at <http://www.hcourt.gov.au/about/concerts>. Registration is required for each concert and a link for registration is available on the website a month prior to a given concert.

The program traverses a diverse range of musical genres performed by local and visiting artists. The Spring offering will include:

**Sunday 8 September/ Igitur Nos Chamber Choir and Limestone Consort**

A delightful and diverse programme of baroque masterpieces for choir and orchestra, including works by Bach, Biber and Monteverdi. Duration 75 minutes.

**Sunday 6 October/ Black Mountain Piano Quartet**

A series of works written for piano quartets exploring the work of Mozart, Mendelssohn, and others. Duration 80 minutes.

**Sunday 13 October/ Canberra City Band**  
Whimsical works that provoke the imagination, including pieces by Australian composers Stuart Greenbaum and Karlin Greenstreet Love. Duration 60 minutes.

**Sunday 3 November/ Canberra Recorder and Early Music Society**

Courtly masquing ayres and dances from a type of entertainment developed in England during the 16th and 17th centuries. Duration 75 minutes

**Sunday 10 November/ Emili Rackemann**

A selection of contemporary classical compositions from Rackemann's previous albums and her upcoming album Elysian. Duration 60 minutes



Black Mountain Piano Quartet/ Canberra City Band (Photos by Peter Hislop)

## Spring performances around Eastlake

National Portrait Gallery. Transcendence. Marking International Day of Peace, Tobias Cole leads a celebration of singing, featuring children and young adults from Turner Trebles, Canberra Children's Choir, Lyneham High Voices, Vocal Fry and ANU Chamber Choir (Saturday 21 September 2019 from 3:00 – 4:00pm).

Canberra Theatre. West Side Story. Bernstein's world-famous score features unforgettable songs including Maria, Tonight, Somewhere, America and I Feel Pretty, which have been loved for generations. West Side Story is a modern version of the Romeo and Juliet theme; a tragic love story which tells the tale of two young people whose happiness is destroyed by the hate of two enemy camps in New York's urban jungle. »C2



»C1 The 'Jets,' sons of previous immigrants to America, battle the new arrivals from Puerto Rico, the 'Sharks,' for domination of the streets.

<https://canberratheatrecentre.com.au/show/west-side-story/> (10 to 27 October).

Llewellyn Hall, ANU, Canberra. Musica Viva presents Nevermind. Musica Viva tells us, 'The four musicians of French ensemble Nevermind— combining flute, violin, viola da gamba and harpsichord—met and founded their group while they were students in Paris. A breath of fresh air in today's classical music scene.. Nevermind is disarmingly relaxed and thoroughly dedicated to the universal appeal of good music.'

<https://musicaviva.com.au/nevermind/> (17 October at 7pm with preconcert talk at 6.15pm).

So relevant to the climate emergency and peace making now

## Chorus has busy program



The Chorus performing 'The People's Passion' at the Australian Centre for Christianity and Culture (Photo by Peter Hislop)/ Chorus members supporting young climate change activists

By Dr Janet Salisbury

'Take it travelling.' 'Everyone should know this history.' 'It's so relevant to the climate emergency and peace-making now!' These were frequent responses from capacity audiences at the Australian Centre for Christianity and Culture for A Chorus of Women's June performances of The People's Passion. The Passion, written within the Chorus by Glenda Cloughley and directed by Johanna McBride, was previously performed in November 2018 (reported in The Eastlaker in December 2018). In stories and songs, it tells of women's far-sighted vision and compassionate, imaginative global actions during and after WW1.

The June production marked the centenary of the signing of the disastrous Treaty of Versailles and revealed more of the inspiring achievements by the women— attendance by three Australians' at the 1919 Women's International League for Peace and Freedom Congress in Zurich; and Eglantyne Jebb's founding of the Save the Children Fund. The finale linked those stories with Greta

Thunberg's founding of the School Strike for Climate movement and New Zealand Prime Minister Jacinda Ardern's leadership after terrorist atrocities earlier this year. The audience loved Miriam Pickard's lively narration, and the beauty and feeling quality of the singing by the women's chorus, Luminescence Children's Choir and soloists.

The Passion project is part of Chorus's wider mission to respond to world affairs, give voice to citizen concerns and bring an artistic voice into public discourse. In other activities, we will join two people's movements on 20 September: the Global Climate Strike (12 noon, Glebe Park); and the Refugee Action Committee's Jam for Refugees (12–8 pm, All Saints, Ainslie). Meanwhile, our 'Peace Bell Song,' composed by Meg Rigby for the launch of the Canberra Rotary World Peace Bell in 2018, is finding its way to World Peace Bell custodians around the world, including Berlin. Chorus will sing our song on World Peace Day at the Canberra bell, Nara Peace Park (11 am, 21 September).

OPEN FOR LUNCH & DINNER Wed to Sat plus SUNDAY LUNCH

**THE BOWRAL BRASSERIE**

...for delicious French food at the 'Paris' end of Bowral...

PH 02 4861 2277  
Shop 2, The Penders  
1 Wingecarribee St Bowral  
[www.bowralbrasserie.com.au](http://www.bowralbrasserie.com.au)

## Manning Clark House

has a series of topical, interesting and challenging talks and events coming.

Check [manningclark.org.au](http://manningclark.org.au) for more information.

## Here, everything is better

We specialise in • Locally baked artisan bread • Fresh produce • Fresh seafood • Gourmet foods • Extensive range of local and imported beers • All your everyday needs

Trading hours • Monday 7.30am-8.00pm • Tuesday-Saturday 7.30am-8.30pm • Sunday 8.00am-7.30pm

**SHOP-RITE**

Barker Street, Griffith 2603/  
Telephone (02) 6295 0781

Site had intrinsic value of box-gum grassy woodland

Often mistaken for ravens and the ever present currawongs

# Precious woodland restored

# Choughs fascinating life history



The woodland in evening light/ Woodland flowers including hardenbergia and glycine/ Volunteers taking a tea break during a working bee

By Rupert Summerson

When I first came to live in Canberra I was astonished to find choughs here. In Europe the two species of chough (red-legged and alpine) only live in the wildest places- on sea cliffs or in the Alps, but here they live right in the city. I soon discovered, however, that our white-winged choughs are only distantly related to European choughs; the latter are members of the crow family while ours are 'mud-builders.'

Be that as it may, they have a fascinating life history. A group of white-winged choughs usually comprise a pair of parents, their chicks, and often have juveniles from the previous years. They sometimes 'kidnap' young birds from other groups, particularly when their own family has lost young due to predators and traffic encounters. They need four years to reach breeding age. They also face 'real estate stress' as they need large feeding territories to supply their family group, which can have up to ten birds.

Choughs are often mistaken for ravens and the ever-present currawongs as all of these birds are almost completely black and are similar in size. Choughs differ from ravens and currawongs in having a curved beak, red eyes and a white wing patch that is visible when they are in flight. Crows and ravens lack the white wing patch, and currawongs have beady yellow eyes. Choughs are much more sociable than these other birds.

However, choughs' habits of moving in family groups and feeding mainly at ground level put them at risk of death»C4



A chough revealing its white patch/ Young choughs being fed

By Libby Mc Cutchan

Tired of seeing rubble and weeds take over a precious local woodland? Watching bare earth washed away after a rain storm? This was the challenge that mobilized the Griffith Woodland Volunteer Group, established in early 2018, to dramatically restore and regenerate a block of urban woodland off La Perouse Street. This site had intrinsic value, containing a wealth of native trees, shrubs and grasses, and many features of endangered box-gum grassy woodland. But it was feeling the pressure of neglect and weed encroachment. Over the past 18 months, local residents have done a remarkable job in ensuring this remains an invaluable ecological asset for community members to enjoy the natural native environment.

The group have held monthly working bees since March 2018, and these have already achieved visible results. In early working bees large volumes of exotic woody weeds (such as cotoneaster, pyra-

cantha, prunus, aloe, viburnum, ash and oaks) were removed, which dramatically changed the appearance of the woodland and revealed its beautiful rocky outcrops. The removal also allowed smaller local plants and grasses to grow and flourish. Several invasive grasses, notably African Love Grass and Chilean Needle Grass, have been largely removed with the help of local ACT grants, and are now being kept under control by a weed control expert.

The weed control work is ongoing. The group have worked with local authorities (TCCS) to modify the mowing plan to allow native grasses to flourish and seed, while remaining compliant with fire regulations. Working bees now focus on weeding smaller weeds and grasses. And some group members are now empowered to undertake their own selective and careful spraying program, having received training in the safe use of herbicides, and in First Aid.

In April this year, the group planted

over 300 forbs (wildflowers) and grasses over two planting days. Good rains and absence of herbivores, such as kangaroos and rabbits, have ensured a good survival rate of the plantings, and the group are hoping for a floral display in Spring.

The group are very appreciative of the support they have received in the form of grants and on ground support from the ACT Government, TCCS and Friends of Grasslands, donations from Griffith Narrabundah Community Association and mentorship from the Red Hill Regeneration Group. The Southern ACT Catchment Group have assisted the group by submitting grant applications on their behalf and overseeing grant acquittal. The group also did their own fundraising this year with a Bunnings BBQ.

Monthly working bees take place on Sunday mornings from 09:00 till 10:30 and are followed by morning tea (provided) and a chat. New members at any time, and gloves and tools »C4

C3 » Choughs have fascinating and injury in our suburbs due attacks by dogs and foxes and being hit by cars. Families of choughs are often seen in Kingston and Barton. There is a family that lives in Telopea Park which, unfortunately, regularly loses its chicks to speeding cars. Last year two were killed on the same day. To protect these interesting and delightful birds please be mindful of their presence when driving and slow down where groups are next to or are crossing roads.

For more information visit <http://www.birdlife.org.au/bird-profile/white-winged-chough>

C3 » Precious woodland restored are provided. Dates for the remainder of 2019 are 22 September, 20 October, 17 November and 15 December. Contact [griffithwoodland@gmail.com](mailto:griffithwoodland@gmail.com) for more information. The woodland is located at Block 55 Section 92, shown on Google Maps as La Perouse Park.

**New Issue Out Now!**  
SPECIAL CUISINE EDITION

Free bilingual French-English magazine  
Find your copy in inner south Canberra:

- Muse
- Paperchain
- Travel Makers
- Kingston Library
- Home French Home
- Stephanies Lingerie

And join our French-speaking community  
[www.facebook.com/canberraenfrancais](http://www.facebook.com/canberraenfrancais)

## Spring Eco Fair

**Saturday 19 October 9am-12noon**  
**11 Currie Cres, Kingston**

Community Garden Fresh seasonal vegetables and seeds  
Devonshire Tea (or Coffee)  
Baptist Care Auxilliary Stall Handcrafts and Preserves  
Christian Mission Charitable Trust Stall  
Clothes Swap

Bring your car and sell your stuff or come and peruse and find new treasures

**Enquiries 0414 098 564**

## EASTLAKE'S MARKETPLACE

Each quarter The Eastlaker is delivered to more than 3000 apartments around the Eastlake area and a further 2000 copies are made available for pick up at shops in Barton, Fyshwick, Griffith, Kingston, Manuka, Narrabundah and Red Hill. This coverage makes it the ideal marketplace for businesses wanting to sell goods and services into the Eastlake area.

To find out about our advertising go to [www.theeastlaker.com.au](http://www.theeastlaker.com.au) or call

XXX

# Red Hill Tennis Club's winter pennant competition



Clockwise from left/ Adult winners Div 3- Richard Stanford, Libby Mc Cutchan, Dan Kennedy, Carol Ruster/ Div 4- John Burrough, Geoff Tooth, Anthony Firth, Hamish and Ian McConville/ Junior winners Div 2 Blue- Tom, Kipp, Elise, Remi/ Div 7 Red 1- Alisdair, Lachlan, Natale/ Div 7 Blue- Max, Remy, Louise/ Div 2 Red- Yutaka, Christian, Kipp



**Adult Pennant**  
The adult pennant continues to gain traction at RHTC and gives players a chance

to improve their game, impress their team mates and just have some competitive fun.

Five teams played in the Autumn 2019 season (three on Monday night and two on Thursday night). Two teams made finals, and one of them managed to win.

Congratulations to Monday Night

Division 4 (Jon Burrough, Geoff Tooth, Anthony Firth and Hamish and Ian McConville) who have played together for eight consecutive seasons and made it to two semi-finals previously. Your win was hard fought and well deserved.

Club members are welcome to play competition tennis – come along to Social Tennis on Tuesdays to meet current pennant players and find out more information.

**Junior Pennant**

The courts will seem much quieter

on Sunday mornings now that Junior Pennant has finished, and parents will be looking forward to quieter times for a while!

Well done to all players and parents for a fabulous Autumn 2019 Junior Pennant season. We hope that you all had some great tennis moments, improved your game and just had fun.

We were thrilled that four teams out of 11 out of ten made finals last Sunday at Weston Creek and extend our congratulations to these teams for playing consis-

tently well through the season.

**Results**

Div 2 Red (Christian, Yutaka and Aidan) helped by Kipp in the final Div 2 Blue (Tom, Kipp, Elise and Remi)

Div 7 Blue 1 (Remy, Max and Elouise)

Div 7 Red 1 (Alisdair, Lachlan and Natale)

Both Div 2 teams and Div 7 Blue 1 managed to win their finals - a fanatastic result. Div 2 Red lost the same final last year, so they were particularly happy.

**Press release**

# Senior Eastlake Football Club teams in preliminary finals

**First Grade Men's**

Eastlake v Queanbeyan at Allinsure Park

Queanbeyan started the year on fire, holding on to top spot on the ladder until the end of round nine, but have slid to finish third at the end of the regular season.



Eastlake will have

to do it the hard way for the second year running if they want a shot at the premiership in 2019. The Tigers dominated this match-up when these teams met last, beating the Demons by 62 points. Win or go home is the equation, these two teams have a lot to play for.

**First Grade Women's at Allinsure Park**

The final match of the first week of finals has last year's premiers Eastlake

up against Ainslie. The Demons were able to get the job done against the Tricolours only two weeks ago in round 14, winning by 49 points. Ainslie has a winning culture though, throw in a neutral ground and the added pressure of a finals match and anything could happen. An intriguing match to round out the first weekend of finals matches.



Action from recent Eastlake Football Club men's and women's matches